



# FoxM1 (phospho-Ser35) rabbit pAb

<b>Catalog No</b>	BYab-10370
<b>Isotype</b>	IgG
<b>Reactivity</b>	Human;Rat;Mouse;
<b>Applications</b>	WB
<b>Gene Name</b>	FOXM1 FKHL16 HFH11 MPP2 WIN
<b>Protein Name</b>	FoxM1 (Ser35)
<b>Immunogen</b>	Synthesized phospho peptide around human FoxM1 (Ser35)
<b>Specificity</b>	This antibody detects endogenous levels of Human FoxM1 (phospho-Ser35)
<b>Formulation</b>	Liquid in PBS containing 50% glycerol, 0.5% BSA and 0.02% sodium azide.
<b>Source</b>	Polyclonal, Rabbit,IgG
<b>Purification</b>	The antibody was affinity-purified from rabbit serum by affinity-chromatography using specific immunogen.
<b>Dilution</b>	WB 1:1000-2000
<b>Concentration</b>	1 mg/ml
<b>Purity</b>	≥90%
<b>Storage Stability</b>	-20°C/1 year
<b>Synonyms</b>	Forkhead box protein M1 (Forkhead-related protein FKHL16) (Hepatocyte nuclear factor 3 forkhead homolog 11) (HFH-11) (HNF-3/fork-head homolog 11) (M-phase phosphoprotein 2) (MPM-2 reactive phosphoprotein 2) (Transcription factor Trident) (Winged-helix factor from INS-1 cells)
<b>Observed Band</b>	83kD
<b>Cell Pathway</b>	Nucleus.
<b>Tissue Specificity</b>	Expressed in thymus, testis, small intestine, colon followed by ovary. Appears to be expressed only in adult organs containing proliferating/cycling cells or in response to growth factors. Also expressed in epithelial cell lines derived from tumors. Not expressed in resting cells. Isoform 2 is highly expressed in testis.
<b>Function</b>	alternative products:Isoform 1 and isoform 2 appear to be the only activators of gene transcription. Isoform 3, found in rat, does not seem to exist in human,developmental stage:Embryonic expression pattern: liver, lung, intestine, kidney, urinary tract; adult expression pattern: intestine, colon, testis and thymus.,domain:Within the protein there is a domain which acts as a transcriptional activator. Insertion of a splicing sequence within it inactivates this

Nanjing BYabscience technology Co.,Ltd



transcriptional activity, as it is the case for isoform 4.,function:Transcriptional activatory factor. May play a role in the control of cell proliferation.,induction:Induced during liver regeneration and oxidative stress.,PTM:Phosphorylated in M (mitotic) phase.,similarity:Contains 1 fork-head DNA-binding domain.,tissue specificity:Expressed in thymus, testis, small intestine, colon followed by ovary. Appears to be expressed only

**Background**

The protein encoded by this gene is a transcriptional activator involved in cell proliferation. The encoded protein is phosphorylated in M phase and regulates the expression of several cell cycle genes, such as cyclin B1 and cyclin D1. Several transcript variants encoding different isoforms have been found for this gene. [provided by RefSeq, Jul 2011],

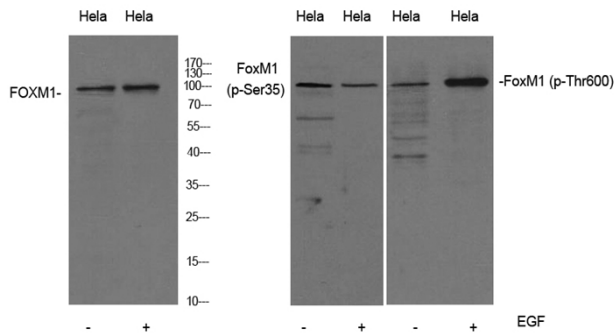
**matters needing attention**

Avoid repeated freezing and thawing!

**Usage suggestions**

This product can be used in immunological reaction related experiments. For more information, please consult technical personnel.

**Products Images**



Western Blot analysis of HeLa cell lysis treated or untreated by EGF 20ng/ml 30'.. Primary Antibody was diluted at 1:1000. Secondary antibody(catalog#:RS23920 was diluted at 1:10000