



CYLD (phospho-Ser418) rabbit pAb

Catalog No	BYab-10365
Isotype	IgG
Reactivity	Human;Rat;Mouse;
Applications	WB
Gene Name	CYLD CYLD1 KIAA0849 HSPC057
Protein Name	CYLD (Ser418)
Immunogen	Synthesized phospho peptide around human CYLD (Ser418)
Specificity	This antibody detects endogenous levels of Human CYLD (phospho-Ser418)
Formulation	Liquid in PBS containing 50% glycerol, 0.5% BSA and 0.02% sodium azide.
Source	Polyclonal, Rabbit,IgG
Purification	The antibody was affinity-purified from rabbit serum by affinity-chromatography using specific immunogen.
Dilution	WB 1:1000-2000
Concentration	1 mg/ml
Purity	≥90%
Storage Stability	-20°C/1 year
Synonyms	Ubiquitin carboxyl-terminal hydrolase CYLD (EC 3.4.19.12) (Deubiquitinating enzyme CYLD) (Ubiquitin thioesterase CYLD) (Ubiquitin-specific-processing protease CYLD)
Observed Band	105kD
Cell Pathway	Cytoplasm . Cytoplasm, perinuclear region. Cytoplasm, cytoskeleton. Cell membrane; Peripheral membrane protein; Cytoplasmic side. Cytoplasm, cytoskeleton, microtubule organizing center, centrosome . Cytoplasm, cytoskeleton, spindle . Cytoplasm, cytoskeleton, cilium basal body . Detected at the microtubule cytoskeleton during interphase. Detected at the midbody during telophase. During metaphase, it remains localized to the centrosome but is also present along the spindle (PubMed:25134987). .
Tissue Specificity	Detected in fetal brain, testis, and skeletal muscle, and at a lower level in adult brain, leukocytes, liver, heart, kidney, spleen, ovary and lung. Isoform 2 is found in all tissues except kidney.
Function	catalytic activity:Ubiquitin C-terminal thioester + H(2)O = ubiquitin + a thiol.;disease:Defects in CYLD are the cause of Brooke-Spiegler syndrome (BRSS) [MIM:605041]. BRSS is an autosomal dominant disorder characterized by

Nanjing BYabscience technology Co.,Ltd



the appearance of multiple skin appendage tumors such as cylindroma, trichoepithelioma, and spiradenoma. These tumors are typically located in the head and neck region, appear in early adulthood, and gradually increase in size and number throughout life. disease: Defects in CYLD are the cause of familial cylindromatosis [MIM:132700]; also known as Ansell-Spiegler cylindromas or turban tumor syndrome or dermal eccrine cylindromatosis. CYLD is an autosomal dominant and highly tumor type-specific disorder. The tumors (known as cylindromas because of their characteristic microscopic architecture) are believed to arise from or recapitulate the appearance of the eccrine or a

Background

This gene encodes a cytoplasmic protein with three cytoskeletal-associated protein-glycine-conserved (CAP-GLY) domains that functions as a deubiquitinating enzyme. Mutations in this gene have been associated with cylindromatosis, multiple familial trichoepithelioma, and Brooke-Spiegler syndrome. Alternate transcriptional splice variants, encoding different isoforms, have been characterized. [provided by RefSeq, Jul 2008],

matters needing attention

Avoid repeated freezing and thawing!

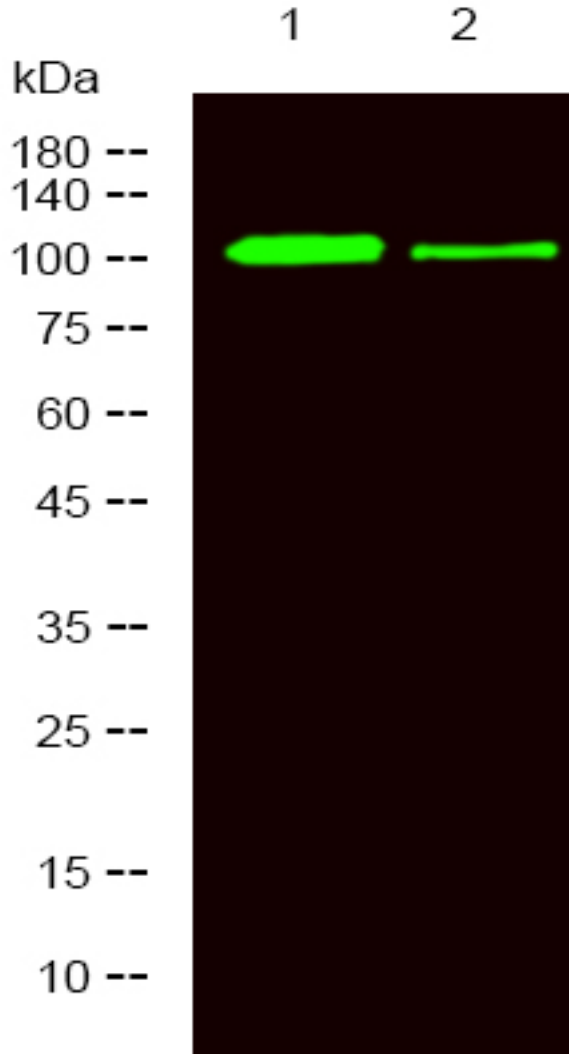
Usage suggestions

This product can be used in immunological reaction related experiments. For more information, please consult technical personnel.



Products Images

Western Blot analysis of 1 A431 treated with LPS, 2 A431, using primary antibody at 1:1000 dilution. Secondary antibody(catalog#:RS23920) was diluted at 1:10000



Nanjing BYabscience technology Co.,Ltd