



GARNL1 (Phospho-T736) Polyclonal Antibody

Catalog No	BYab-10355
Isotype	IgG
Reactivity	Human; Mouse; Rat
Applications	IHC;IF;WB
Gene Name	RALGAPA1 GARNL1 KIAA0884 TULIP1
Protein Name	GARNL1 (Phospho-T736)
Immunogen	Synthesized peptide derived from human GARNL1 (Phospho-T736)
Specificity	This antibody detects endogenous phospho levels of GARNL1 (Phospho-T736) at Human, Mouse, Rat
Formulation	Liquid in PBS containing 50% glycerol, 0.5% BSA and 0.02% sodium azide.
Source	Polyclonal, Rabbit,IgG
Purification	The antibody was affinity-purified from rabbit serum by affinity-chromatography using specific immunogen.
Dilution	IHC-p 1:50-200, WB 1:500-2000. IF 1:50-200
Concentration	1 mg/ml
Purity	≥90%
Storage Stability	-20°C/1 year
Synonyms	Ral GTPase-activating protein subunit alpha-1 (GAP-related-interacting partner to E12;GRIPE;GTPase-activating Rap/Ran-GAP domain-like 1;Tuberin-like protein 1;p240)
Observed Band	220kD
Cell Pathway	Cytoplasm . Nucleus . Translocated to the nucleus, when associated with TCF3/E12. .
Tissue Specificity	Widely expressed.
Function	regulation of small GTPase mediated signal transduction,
Background	This gene encodes a major subunit of the RAL-GTPase activating protein. A similar protein in mouse binds E12, a transcriptional regulator of immunoglobulin genes. The mouse protein also functions in skeletal muscle by binding to the regulatory 14-3-3 proteins upon stimulation with insulin or muscle contraction. A pseudogene of this gene has been identified on chromosome 9. [provided by RefSeq, Oct 2016],

Nanjing BYabscience technology Co.,Ltd



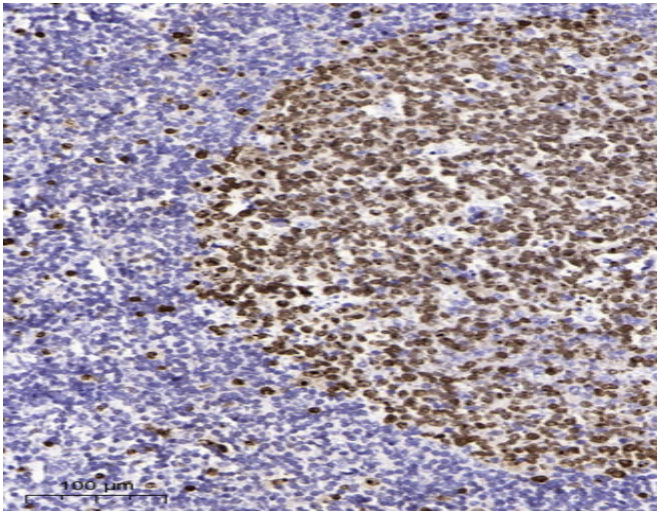
matters needing attention

Avoid repeated freezing and thawing!

Usage suggestions

This product can be used in immunological reaction related experiments. For more information, please consult technical personnel.

Products Images



Immunohistochemical analysis of paraffin-embedded human tonsil. 1, Antibody was diluted at 1:200(4° overnight). 2, Tris-EDTA,pH9.0 was used for antigen retrieval. 3,Secondary antibody was diluted at 1:200(room temperature, 45min).