



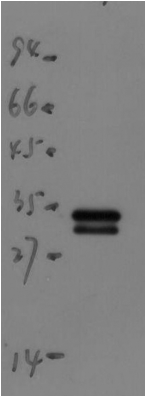
# mScarlet Rabbit pAb

<b>Catalog No</b>	BYab-10316
<b>Isotype</b>	IgG
<b>Reactivity</b>	All
<b>Applications</b>	IHC;WB
<b>Gene Name</b>	
<b>Protein Name</b>	mScarlet
<b>Immunogen</b>	Synthesized peptide derived from mScarlet
<b>Specificity</b>	This antibody detects endogenous levels of mScarlet
<b>Formulation</b>	Liquid in PBS containing 50% glycerol, 0.5% BSA and 0.80% sodium azide.
<b>Source</b>	Polyclonal, Rabbit,IgG
<b>Purification</b>	The antibody was affinity-purified from rabbit serum by affinity-chromatography using specific immunogen.
<b>Dilution</b>	IHC-p1:50-200 ,WB 1:1000-2000
<b>Concentration</b>	1 mg/ml
<b>Purity</b>	≥90%
<b>Storage Stability</b>	-20°C/1 year
<b>Synonyms</b>	YM33120
<b>Observed Band</b>	
<b>Cell Pathway</b>	
<b>Tissue Specificity</b>	
<b>Function</b>	
<b>Background</b>	mScarlet: a bright monomeric red fluorescent protein for cellular imaging.
<b>matters needing attention</b>	Avoid repeated freezing and thawing!
<b>Usage suggestions</b>	This product can be used in immunological reaction related experiments. For more information, please consult technical personnel.

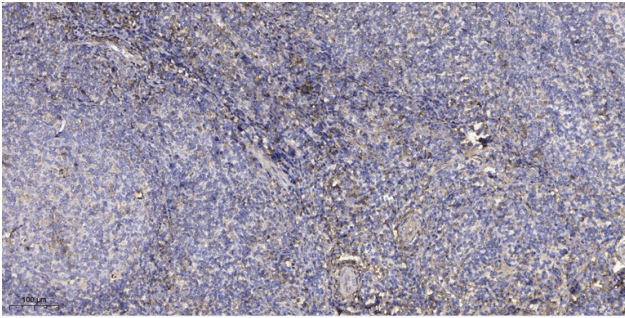
Nanjing BYabscience technology Co.,Ltd



## Products Images



Western blot analysis of mScarlet recombinant transfected 293T Cell Lysate using mScarlet Rabbit Polyclonal Ab diluted at 1:2,000.



Immunohistochemical analysis of paraffin-embedded human tonsil. 1, Antibody was diluted at 1:200(4° overnight). 2, Tris-EDTA,pH9.0 was used for antigen retrieval. 3,Secondary antibody was diluted at 1:200(room temperature, 30min).