



SARS-COV-2 Spike Protein S2 Rabbit pAb

Catalog No	BYab-10311
Isotype	IgG
Reactivity	Human virus
Applications	WB
Gene Name	SARS-COV-2 Spike Protein S2
Protein Name	SARS-COV-2 Spike Protein S2
Immunogen	Synthesized peptide derived from SARS-COV-2 Spike Protein S2
Specificity	This antibody detects endogenous levels of SARS-COV-2 Spike Protein S2
Formulation	Liquid in PBS containing 50% glycerol, 0.5% BSA and 0.18% sodium azide.
Source	Polyclonal, Rabbit,IgG
Purification	The antibody was affinity-purified from rabbit serum by affinity-chromatography using specific immunogen.
Dilution	WB 1:1000-2000
Concentration	1 mg/ml
Purity	≥90%
Storage Stability	-20°C/1 year
Synonyms	YM33058
Observed Band	
Cell Pathway	
Tissue Specificity	
Function	
Background	The spike (S) glycoprotein of coronaviruses is known to be essential in the binding of the virus to the host cell at the advent of the infection process. Most notable is severe acute respiratory syndrome (SARS). The severe acute respiratory syndrome-coronavirus (SARS-CoV) spike (S) glycoprotein alone can mediate the membrane fusion required for virus entry and cell fusion. It is also a major immunogen and a target for entry inhibitors. It's been reported that 2019-nCoV can infect the human respiratory epithelial cells through interaction with the human ACE2 receptor.

Nanjing BYabscience technology Co.,Ltd



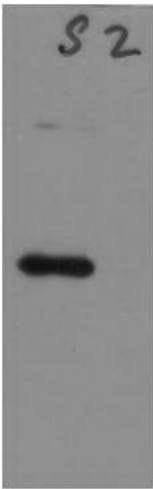
matters needing attention

Avoid repeated freezing and thawing!

Usage suggestions

This product can be used in immunological reaction related experiments. For more information, please consult technical personnel.

Products Images



Western blot analysis of recombinant SARS-CoV-2 Spike Protein using Rabbit pAb diluted at 1:5,000.