



Alliinase Polyclonal Antibody

Catalog No	BYab-10295
Isotype	IgG
Reactivity	AlliumsativumL
Applications	WB
Gene Name	
Protein Name	
Immunogen	Purified Protein
Specificity	The antibody detects endogenous and recombinant Alliinase proteins.
Formulation	PBS, pH 7.4, containing 0.5%BSA, 0.02% sodium azide as Preservative and 50% Glycerol.
Source	Polyclonal, Rabbit,IgG
Purification	The antibody was affinity-purified from rabbit antiserum by affinity-chromatography using specific immunogen.
Dilution	WB: 1:3000
Concentration	1 mg/ml
Purity	≥90%
Storage Stability	-20°C/1 year
Synonyms	YM3225
Observed Band	50kD
Cell Pathway	
Tissue Specificity	
Function	
Background	Alliinase are found in plants of the genus Allium, such as garlic and onions. Alliinase is responsible for catalyzing chemical reactions that produce the volatile chemicals that give these foods their flavors, odors, and tear-inducing properties. Alliinases are part of the plant's defense against herbivores. Alliinase is normally sequestered within a plant cell, but, when the plant is damaged by a feeding animal, the alliinase is released to catalyze the production of the pungent chemicals. This tends to have a deterrent effect on the animal. The same reaction occurs when onion or garlic is cut with a knife in the kitchen.

Nanjing BYabscience technology Co.,Ltd



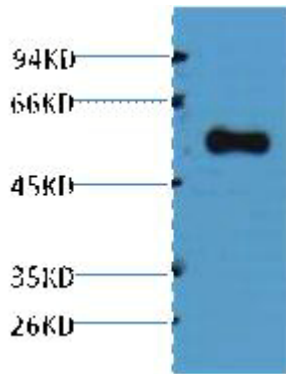
matters needing attention

Avoid repeated freezing and thawing!

Usage suggestions

This product can be used in immunological reaction related experiments. For more information, please consult technical personnel.

Products Images



Western blot analysis of purified alliinase, diluted at 1:5000. Secondary antibody(catalog#:RS0002) was diluted at 1:20000