



# ATG5 Rabbit Polyclonal Antibody

<b>Catalog No</b>	BYab-10290
<b>Isotype</b>	IgG
<b>Reactivity</b>	Human;Mouse;Rat
<b>Applications</b>	WB;IHC;IF
<b>Gene Name</b>	ATG5 APG5L ASP
<b>Protein Name</b>	Autophagy protein 5 (APG5-like) (Apoptosis-specific protein)
<b>Immunogen</b>	Recombinant Protein of ATG5
<b>Specificity</b>	The antibody detects endogenous ATG5 protein
<b>Formulation</b>	Liquid in PBS containing 50% glycerol, 0.5% BSA and 0.02% sodium azide.
<b>Source</b>	Polyclonal, Rabbit,IgG
<b>Purification</b>	The antibody was affinity-purified from rabbit antiserum by affinity-chromatography using epitope-specific immunogen.
<b>Dilution</b>	IHC-p 1:50-300,WB 1:500-2000. IF 1:50-200
<b>Concentration</b>	1 mg/ml
<b>Purity</b>	≥90%
<b>Storage Stability</b>	-20°C/1 year
<b>Synonyms</b>	Autophagy protein 5 (APG5-like;Apoptosis-specific protein)
<b>Observed Band</b>	51kD
<b>Cell Pathway</b>	Cytoplasm . Preautophagosomal structure membrane; Peripheral membrane protein. Colocalizes with nonmuscle actin. The conjugate detaches from the membrane immediately before or after autophagosome formation is completed (By similarity). Localizes also to discrete punctae along the ciliary axoneme and to the base of the ciliary axoneme. .
<b>Tissue Specificity</b>	Ubiquitous. The mRNA is present at similar levels in viable and apoptotic cells, whereas the protein is dramatically highly expressed in apoptotic cells.
<b>Function</b>	function:May play an important role in the apoptotic process, possibly within the modified cytoskeleton. Its expression is a relatively late event in the apoptotic process, occurring downstream of caspase activity. ,function:Required for autophagy. Conjugates to ATG12 and associates with isolation membrane to form cup-shaped isolation membrane and autophagosome. The conjugate detaches from the membrane immediately before or after autophagosome formation is completed. ,induction:By apoptotic stimuli. ,PTM:Conjugated to ATG12; which is essential for autophagy, but is not required for association with isolation

Nanjing BYabscience technology Co.,Ltd



membrane.,similarity:Belongs to the ATG5 family.,subcellular location:Colocalizes with nonmuscle actin.,tissue specificity:Ubiquitous. The mRNA is present at similar levels in viable and apoptotic cells, whereas the protein is dramatically highly expressed in apoptotic cells.,

#### Background

The protein encoded by this gene, in combination with autophagy protein 12, functions as an E1-like activating enzyme in a ubiquitin-like conjugating system. The encoded protein is involved in several cellular processes, including autophagic vesicle formation, mitochondrial quality control after oxidative damage, negative regulation of the innate antiviral immune response, lymphocyte development and proliferation, MHC II antigen presentation, adipocyte differentiation, and apoptosis. Several transcript variants encoding different protein isoforms have been found for this gene. [provided by RefSeq, Sep 2015],

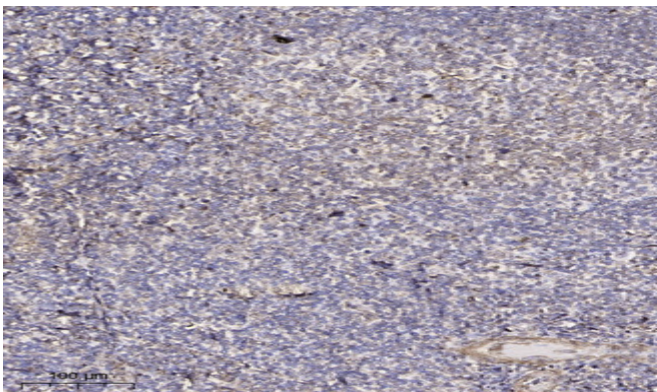
#### matters needing attention

Avoid repeated freezing and thawing!

#### Usage suggestions

This product can be used in immunological reaction related experiments. For more information, please consult technical personnel.

## Products Images



Immunohistochemical analysis of paraffin-embedded human tonsil. 1, Antibody was diluted at 1:200(4° overnight). 2, Tris-EDTA,pH9.0 was used for antigen retrieval. 3,Secondary antibody was diluted at 1:200(room temperature, 30min).