



ATG7 Rabbit Polyclonal Antibody

Catalog No	BYab-10289
Isotype	IgG
Reactivity	Human;Mouse;Rat
Applications	WB;IHC;IF
Gene Name	ATG7 APG7L
Protein Name	Ubiquitin-like modifier-activating enzyme ATG7 (ATG12-activating enzyme E1 ATG7) (Autophagy-related protein 7) (APG7-like) (hAGP7) (Ubiquitin-activating enzyme E1-like protein)
Immunogen	Recombinant Protein of ATG7
Specificity	The antibody detects endogenous ATG7 protein
Formulation	Liquid in PBS containing 50% glycerol, 0.5% BSA and 0.02% sodium azide.
Source	Polyclonal, Rabbit,IgG
Purification	The antibody was affinity-purified from rabbit antiserum by affinity-chromatography using epitope-specific immunogen.
Dilution	IHC-p 1:50-300,WB 1:500-2000. IF 1:50-200
Concentration	1 mg/ml
Purity	≥90%
Storage Stability	-20°C/1 year
Synonyms	Ubiquitin-like modifier-activating enzyme ATG7 (ATG12-activating enzyme E1 ATG7;Autophagy-related protein 7;APG7-like;hAGP7;Ubiquitin-activating enzyme E1-like protein)
Observed Band	78kD
Cell Pathway	Cytoplasm . Preautophagosomal structure . Localizes also to discrete punctae along the ciliary axoneme and to the base of the ciliary axoneme. .
Tissue Specificity	Widely expressed, especially in kidney, liver, lymph nodes and bone marrow.
Function	domain:The C-terminal part of the protein is essential for the dimerization and interaction with ATG3 and ATG12.,function:Functions as an E1 enzyme essential for multisubstrates such as GABARAPL1 and ATG12. Forms intermediate conjugates with GABARAPL1 (GABARAPL2, GABARAP or MAP1ALC3). Formation of the final GABARAPL1-PE conjugate is essential for autophagy.,similarity:Belongs to the ATG7 family.,subunit:Homodimer (By similarity). Interacts with ATG3 and ATG12. The complex, composed of ATG3 and ATG7, plays a role in the conjugation of ATG12 to ATG5.,tissue

Nanjing BYabscience technology Co.,Ltd



specificity:Widely expressed, especially in kidney, liver, lymph nodes and bone marrow.,

Background

This gene encodes an E1-like activating enzyme that is essential for autophagy and cytoplasmic to vacuole transport. The encoded protein is also thought to modulate p53-dependent cell cycle pathways during prolonged metabolic stress. It has been associated with multiple functions, including axon membrane trafficking, axonal homeostasis, mitophagy, adipose differentiation, and hematopoietic stem cell maintenance. Alternative splicing results in multiple transcript variants. [provided by RefSeq, Sep 2015],

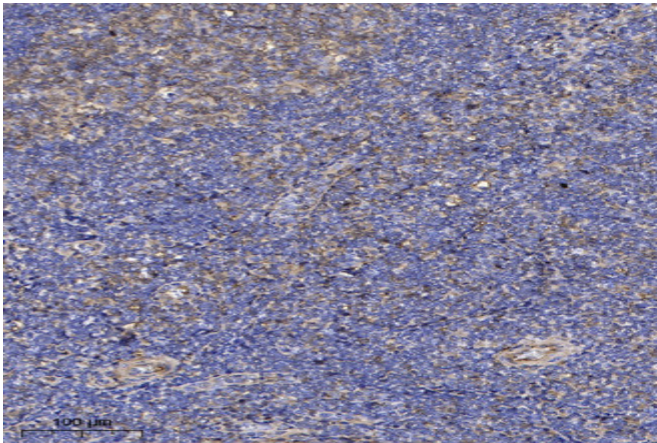
matters needing attention

Avoid repeated freezing and thawing!

Usage suggestions

This product can be used in immunological reaction related experiments. For more information, please consult technical personnel.

Products Images



Immunohistochemical analysis of paraffin-embedded human tonsil. 1, Antibody was diluted at 1:200(4° overnight). 2, Tris-EDTA,pH9.0 was used for antigen retrieval. 3,Secondary antibody was diluted at 1:200(room temperature, 30min).