



GBRAP rabbit pAb

Catalog No	BYab-09107
Isotype	IgG
Reactivity	Human; Mouse;Rat
Applications	WB
Gene Name	GABARAP FLC3B HT004
Protein Name	GBRAP
Immunogen	Synthesized peptide derived from human GBRAP AA range: 8-58
Specificity	This antibody detects endogenous levels of GBRAP at Human/Mouse/Rat
Formulation	Liquid in PBS containing 50% glycerol, 0.5% BSA and 0.02% sodium azide.
Source	Polyclonal, Rabbit,IgG
Purification	The antibody was affinity-purified from rabbit serum by affinity-chromatography using specific immunogen.
Dilution	WB 1: 500-2000
Concentration	1 mg/ml
Purity	≥90%
Storage Stability	-20°C/1 year
Synonyms	
Observed Band	
Cell Pathway	Cytoplasmic vesicle, autophagosome membrane . Endomembrane system . Cytoplasm, cytoskeleton . Golgi apparatus membrane . Cytoplasmic vesicle . Largely associated with intracellular membrane structures including the Golgi apparatus and postsynaptic cisternae. Colocalizes with microtubules (By similarity). Localizes also to discrete punctae along the ciliary axoneme (By similarity). .
Tissue Specificity	Heart, brain, placenta, liver, skeletal muscle, kidney and pancreas.
Function	function:May play a role in intracellular transport of GABA(A) receptors and its interaction with the cytoskeleton.,similarity:Belongs to the MAP1 LC3 family.,subcellular location:Largely associated with intracellular membrane structures including the Golgi apparatus and post-synaptic cisternae. Colocalizes with microtubules.,subunit:Interacts with GPHN and NSF (By similarity). Interacts with GABRG2, beta-tubulin and ULK1.,tissue specificity:Heart, brain, placenta, liver, skeletal muscle, kidney and pancreas.,

Nanjing BYabscience technology Co.,Ltd



Background

Gamma-aminobutyric acid A receptors [GABA(A) receptors] are ligand-gated chloride channels that mediate inhibitory neurotransmission. This gene encodes GABA(A) receptor-associated protein, which is highly positively charged in its N-terminus and shares sequence similarity with light chain-3 of microtubule-associated proteins 1A and 1B. This protein clusters neurotransmitter receptors by mediating interaction with the cytoskeleton. [provided by RefSeq, Jul 2008],

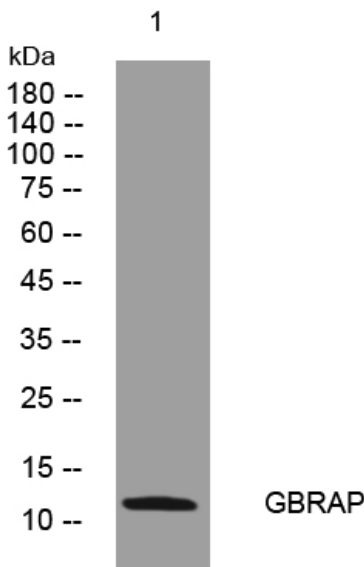
matters needing attention

Avoid repeated freezing and thawing!

Usage suggestions

This product can be used in immunological reaction related experiments. For more information, please consult technical personnel.

Products Images



Western blot analysis of lysates from HeLa cells, primary antibody was diluted at 1:1000, 4° over night