



# ACRC rabbit pAb

|                           |   |
|---------------------------|---|
| <b>Catalog No</b>         | BYab-09098  |
| <b>Isotype</b>            | IgG   |
| <b>Reactivity</b>         | Human;Rat;Mouse;  |
| <b>Applications</b>       | WB  |
| <b>Gene Name</b>          | ACRC  |
| <b>Protein Name</b>       | ACRC  |
| <b>Immunogen</b>          | Synthesized peptide derived from human ACRC AA range: 444-494   |
| <b>Specificity</b>        | This antibody detects endogenous levels of ACRC at Human  |
| <b>Formulation</b>        | Liquid in PBS containing 50% glycerol, 0.5% BSA and 0.02% sodium azide.   |
| <b>Source</b>             | Polyclonal, Rabbit,IgG  |
| <b>Purification</b>       | The antibody was affinity-purified from rabbit serum by affinity-chromatography using specific immunogen.   |
| <b>Dilution</b>           | WB 1: 500-2000  |
| <b>Concentration</b>      | 1 mg/ml   |
| <b>Purity</b>             | ≥90%  |
| <b>Storage Stability</b>  | -20°C/1 year  |
| <b>Synonyms</b>           |   |
| <b>Observed Band</b>      |   |
| <b>Cell Pathway</b>       | Nucleus . Nucleus, PML body . Chromosome . Co-localizes with SUMO2 at PML bodies in all interphase cells (PubMed:30914427). Localizes on condensed chromosomes in spermatocytes in G2 and M during meiotic prophase (By similarity). .  |
| <b>Tissue Specificity</b> | Expressed in germ cells of the testis (at protein level) (PubMed:27718356). Detected in skeletal muscle, liver, kidney, pancreas, heart, lung and brain (PubMed:11714101). Expressed throughout spermatogenesis, from spermatogonia to elongated spermatids, in normal adult testis (at protein level) (PubMed:33963445). |
| <b>Function</b>           | similarity:Belongs to the serine-aspartate repeat-containing protein (SDr) family.,tissue specificity:Detected in skeletal muscle, liver, kidney, pancreas, heart, lung and brain.,   |
| <b>Background</b>         |   |

Nanjing BYabscience technology Co.,Ltd



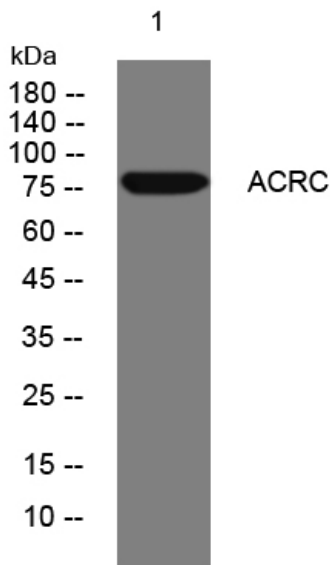
**matters needing attention**

Avoid repeated freezing and thawing!

**Usage suggestions**

This product can be used in immunological reaction related experiments. For more information, please consult technical personnel.

**Products Images**



Nanjing BYabscience technology Co.,Ltd

网址: [www.njbybio.com](http://www.njbybio.com)

官方热线: 025-5229-8998

监督电话: 15950492658