



NMD3 rabbit pAb

Catalog No	BYab-09096
Isotype	IgG
Reactivity	Human; Mouse
Applications	WB
Gene Name	NMD3 CGI-07
Protein Name	NMD3
Immunogen	Synthesized peptide derived from human NMD3 AA range: 235-285
Specificity	This antibody detects endogenous levels of NMD3 at Human/Mouse
Formulation	Liquid in PBS containing 50% glycerol, 0.5% BSA and 0.02% sodium azide.
Source	Polyclonal, Rabbit,IgG
Purification	The antibody was affinity-purified from rabbit serum by affinity-chromatography using specific immunogen.
Dilution	WB 1: 500-2000
Concentration	1 mg/ml
Purity	≥90%
Storage Stability	-20°C/1 year
Synonyms	
Observed Band	
Cell Pathway	Cytoplasm . Nucleus . Shuttles between the nucleus/nucleolus and the cytoplasm in a XPO1/CRM1-dependent manner. .
Tissue Specificity	
Function	function:Acts as an adapter for the XPO1/CRM1-mediated export of the 60S ribosomal subunit.,similarity:Belongs to the NMD3 family.,subcellular location:Shuttles between the nucleus/nucleolus and the cytoplasm in a XPO1/CRM1-dependent manner.,subunit:Found in a 60S ribosomal subunit export complex with RAN and XPO1. Interacts with XPO1. Associates with the 60S ribosomal subunit.,
Background	Ribosomal 40S and 60S subunits associate in the nucleolus and are exported to the cytoplasm. The protein encoded by this gene is involved in the passage of the 60S subunit through the nuclear pore complex and into the cytoplasm. Several transcript variants exist for this gene, but the full-length natures of only two have been described to date. [provided by RefSeq, Feb 2016],

Nanjing BYabscience technology Co.,Ltd



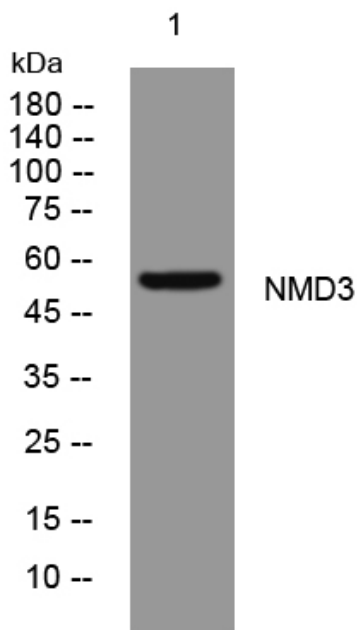
matters needing attention

Avoid repeated freezing and thawing!

Usage suggestions

This product can be used in immunological reaction related experiments. For more information, please consult technical personnel.

Products Images



Western blot analysis of lysates from A431 cells, primary antibody was diluted at 1:1000, 4° over night