



# HP1B3 rabbit pAb

<b>Catalog No</b>	BYab-09090
<b>Isotype</b>	IgG
<b>Reactivity</b>	Human; Mouse;Rat
<b>Applications</b>	WB
<b>Gene Name</b>	HP1BP3
<b>Protein Name</b>	HP1B3
<b>Immunogen</b>	Synthesized peptide derived from human HP1B3 AA range: 283-333
<b>Specificity</b>	This antibody detects endogenous levels of HP1B3 at Human/Mouse/Rat
<b>Formulation</b>	Liquid in PBS containing 50% glycerol, 0.5% BSA and 0.02% sodium azide.
<b>Source</b>	Polyclonal, Rabbit,IgG
<b>Purification</b>	The antibody was affinity-purified from rabbit serum by affinity-chromatography using specific immunogen.
<b>Dilution</b>	WB 1: 500-2000
<b>Concentration</b>	1 mg/ml
<b>Purity</b>	≥90%
<b>Storage Stability</b>	-20°C/1 year
<b>Synonyms</b>	
<b>Observed Band</b>	
<b>Cell Pathway</b>	Nucleus . Chromosome . localized in nuclei but not in nucleoli in interphase. Colocalized with chromosomes in mitosis, with a gradually increased during G1 progression and a maximum level during late G1 phase (G1/S). .
<b>Tissue Specificity</b>	
<b>Function</b>	function:Component of heterochromatin, may be involved in chromatin structure and function.,PTM:Phosphorylated upon DNA damage, probably by ATM or ATR.,similarity:Belongs to the histone H1/H5 family.,similarity:In the C-terminal section; belongs to the histone H1/H5 family.,subunit:Interacts with CBX5.,
<b>Background</b>	
<b>matters needing attention</b>	Avoid repeated freezing and thawing!

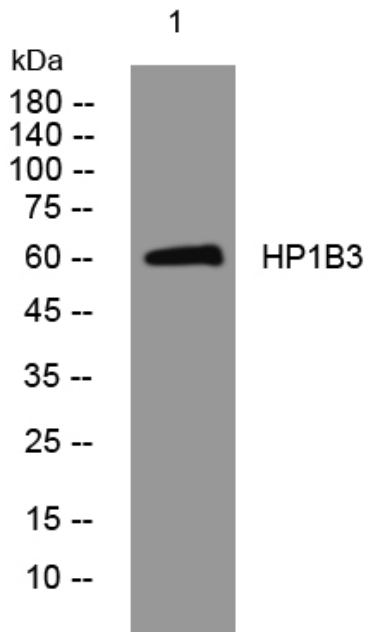
Nanjing BYabscience technology Co.,Ltd



**Usage suggestions**

This product can be used in immunological reaction related experiments. For more information, please consult technical personnel.

**Products Images**



Western blot analysis of lysates from K562 cells, primary antibody was diluted at 1:1000, 4° over night