



NT5D3 rabbit pAb

Catalog No	BYab-09077
Isotype	IgG
Reactivity	Human; Mouse
Applications	WB
Gene Name	NT5DC3 GNN TU12B1-TY
Protein Name	NT5D3
Immunogen	Synthesized peptide derived from human NT5D3 AA range: 227-277
Specificity	This antibody detects endogenous levels of NT5D3 at Human/Mouse
Formulation	Liquid in PBS containing 50% glycerol, 0.5% BSA and 0.02% sodium azide.
Source	Polyclonal, Rabbit,IgG
Purification	The antibody was affinity-purified from rabbit serum by affinity-chromatography using specific immunogen.
Dilution	WB 1: 500-2000
Concentration	1 mg/ml
Purity	≥90%
Storage Stability	-20°C/1 year
Synonyms	
Observed Band	
Cell Pathway	mitochondrion,cytosol,receptor complex,
Tissue Specificity	Expressed in brain, placenta, skeletal muscle, pancreas, testis, uterus, and small intestine. Reduced expression in pancreatic cancer cells.
Function	cofactor: Binds 1 magnesium ion per subunit.,developmental stage: Expression was increased in 2 acute myeloid leukemia clusters.,disease: Reduced function may contribute to the development and/or progression of pancreatic cancer.,similarity: Belongs to the 5'(3')-deoxyribonucleotidase family.,tissue specificity: Expressed in brain, placenta, skeletal muscle, pancreas, testis, uterus, and small intestine.,
Background	
matters needing attention	Avoid repeated freezing and thawing!

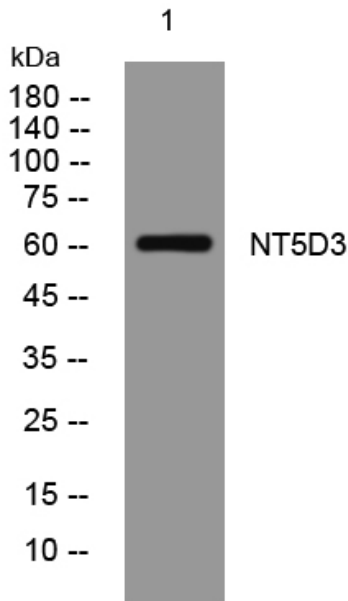
Nanjing BYabscience technology Co.,Ltd



Usage suggestions

This product can be used in immunological reaction related experiments. For more information, please consult technical personnel.

Products Images



Western blot analysis of lysates from A431 cells, primary antibody was diluted at 1:1000, 4° over night