



YN4236

SNTAN rabbit pAb

Catalog No	BYab-09076
Isotype	IgG
Reactivity	Human; Mouse
Applications	WB
Gene Name	SNTN S100A1L
Protein Name	SNTAN
Immunogen	Synthesized peptide derived from human SNTAN AA range: 65-115
Specificity	This antibody detects endogenous levels of SNTAN at Human/Mouse
Formulation	Liquid in PBS containing 50% glycerol, 0.5% BSA and 0.02% sodium azide.
Source	Polyclonal, Rabbit,IgG
Purification	The antibody was affinity-purified from rabbit serum by affinity-chromatography using specific immunogen.
Dilution	WB 1: 500-2000
Concentration	1 mg/ml
Purity	≥90%
Storage Stability	-20°C/1 year
Synonyms	
Observed Band	
Cell Pathway	Cell projection, cilium . Expressed exclusively at the cilium tip where it localizes between the cell membrane and peripheral A-subfibers. .
Tissue Specificity	
Function	function:May be a component of the linker structure that bridges the ciliary membrane and peripheral singlet microtubules.,miscellaneous:'Sentan' means 'tip' in Japanese.,similarity:Belongs to the S-100 family.,subcellular location:Expressed exclusively at the cilium tip where it localizes between the cell membrane and peripheral A-subfibers.,
Background	

Nanjing BYabscience technology Co.,Ltd

网址: www.njbybio.com

官方热线: 025-5229-8998

监督电话: 15950492658



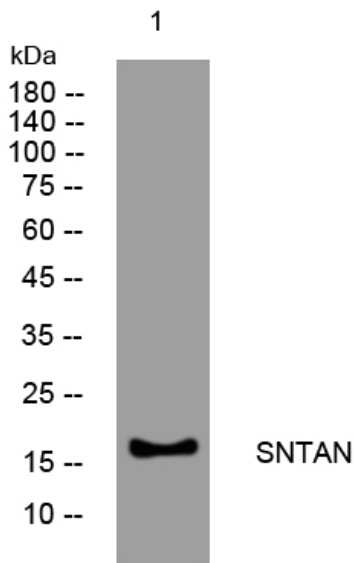
matters needing attention

Avoid repeated freezing and thawing!

Usage suggestions

This product can be used in immunological reaction related experiments. For more information, please consult technical personnel.

Products Images



Nanjing BYabscience technology Co.,Ltd

网址: www.njbybio.com

官方热线: 025-5229-8998

监督电话: 15950492658