



ATS3 rabbit pAb

Catalog No	BYab-09044
Isotype	IgG
Reactivity	Human;Rat;Mouse;
Applications	WB
Gene Name	ADAMTS3 KIAA0366
Protein Name	ATS3
Immunogen	Synthesized peptide derived from human ATS3 AA range: 600-650
Specificity	This antibody detects endogenous levels of ATS3 at Human
Formulation	Liquid in PBS containing 50% glycerol, 0.5% BSA and 0.02% sodium azide.
Source	Polyclonal, Rabbit,IgG
Purification	The antibody was affinity-purified from rabbit serum by affinity-chromatography using specific immunogen.
Dilution	WB 1: 500-2000
Concentration	1 mg/ml
Purity	≥90%
Storage Stability	-20°C/1 year
Synonyms	
Observed Band	
Cell Pathway	Secreted . Secreted, extracellular space, extracellular matrix .
Tissue Specificity	Found in cartilage and skin.
Function	caution:Has sometimes been referred to as ADAMTS4.,cofactor:Binds 1 zinc ion per subunit.,domain:The spacer domain and the TSP type-1 domains are important for a tight interaction with the extracellular matrix.,function:Cleaves the propeptides of type II collagen prior to fibril assembly. Does not act on types I and III collagens.,PTM:The precursor is cleaved by a furin endopeptidase.,similarity:Contains 1 disintegrin domain.,similarity:Contains 1 peptidase M12B domain.,similarity:Contains 1 PLAC domain.,similarity:Contains 4 TSP type-1 domains.,tissue specificity:Found in cartilage and skin.,
Background	This gene encodes a member of the ADAMTS (a disintegrin and metalloproteinase with thrombospondin motifs) protein family. Members of the family share several distinct protein modules, including a propeptide region, a

Nanjing BYabscience technology Co.,Ltd



metalloproteinase domain, a disintegrin-like domain, and a thrombospondin type 1 (TS) motif. Individual members of this family differ in the number of C-terminal TS motifs, and some have unique C-terminal domains. The encoded preproprotein is proteolytically processed to generate the mature protease. This protease, a member of the procollagen aminopropeptidase subfamily of proteins, may play a role in the processing of type II fibrillar collagen in articular cartilage. [provided by RefSeq, Feb 2016],

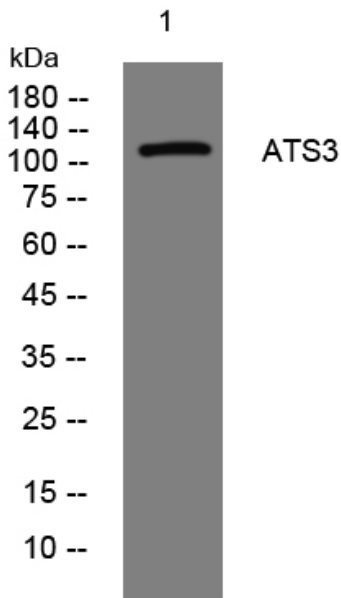
matters needing attention

Avoid repeated freezing and thawing!

Usage suggestions

This product can be used in immunological reaction related experiments. For more information, please consult technical personnel.

Products Images



Western blot analysis of lysates from HeLa cells, primary antibody was diluted at 1:1000, 4° over night