



# CLC4E rabbit pAb

<b>Catalog No</b>	BYab-09034
<b>Isotype</b>	IgG
<b>Reactivity</b>	Human; Mouse;Rat
<b>Applications</b>	WB
<b>Gene Name</b>	CLEC4E CLECSF9 MINCLE UNQ218/PRO244
<b>Protein Name</b>	CLC4E
<b>Immunogen</b>	Synthesized peptide derived from human CLC4E AA range: 46-96
<b>Specificity</b>	This antibody detects endogenous levels of CLC4E at Human/Mouse/Rat
<b>Formulation</b>	Liquid in PBS containing 50% glycerol, 0.5% BSA and 0.02% sodium azide.
<b>Source</b>	Polyclonal, Rabbit,IgG
<b>Purification</b>	The antibody was affinity-purified from rabbit serum by affinity-chromatography using specific immunogen.
<b>Dilution</b>	WB 1: 500-2000
<b>Concentration</b>	1 mg/ml
<b>Purity</b>	≥90%
<b>Storage Stability</b>	-20°C/1 year
<b>Synonyms</b>	
<b>Observed Band</b>	
<b>Cell Pathway</b>	Cell membrane ; Single-pass type II membrane protein . Cell projection, phagocytic cup .
<b>Tissue Specificity</b>	Expressed in monocytes and macrophages.
<b>Function</b>	function:May play a role in the response to inflammatory stimuli in peritoneal macrophages. May be involved in immune surveillance processes under transcriptional control of CEBPB.,online information:Mincle,similarity:Contains 1 C-type lectin domain.,
<b>Background</b>	This gene encodes a member of the C-type lectin/C-type lectin-like domain (CTL/CTLD) superfamily. Members of this family share a common protein fold and have diverse functions, such as cell adhesion, cell-cell signalling, glycoprotein turnover, and roles in inflammation and immune response. The encoded type II transmembrane protein is a downstream target of CCAAT/enhancer binding protein (C/EBP), beta (CEBPB) and may play a role in inflammation. Alternative splice variants have been described but their full-length sequence has not been

**Nanjing BYabscience technology Co.,Ltd**



determined. This gene is closely linked to other CTL/CTLD superfamily members on chromosome 12p13 in the natural killer gene complex region. [provided by RefSeq, Jul 2008],

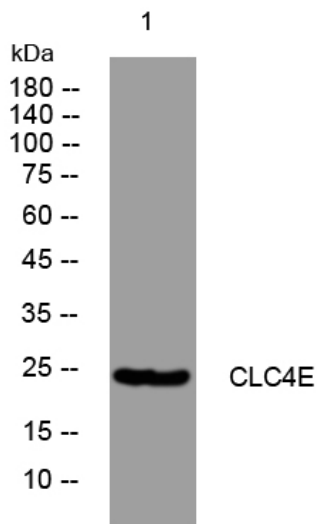
**matters needing attention**

Avoid repeated freezing and thawing!

**Usage suggestions**

This product can be used in immunological reaction related experiments. For more information, please consult technical personnel.

## Products Images



Western blot analysis of lysates from U2OS cells, primary antibody was diluted at 1:1000, 4° over night