



YN4183

RAB7A rabbit pAb

Catalog No	BYab-09023
Isotype	IgG
Reactivity	Human; Mouse;Rat
Applications	WB
Gene Name	RAB7A RAB7
Protein Name	RAB7A
Immunogen	Synthesized peptide derived from human RAB7A AA range: 84-134
Specificity	This antibody detects endogenous levels of RAB7A at Human/Mouse/Rat
Formulation	Liquid in PBS containing 50% glycerol, 0.5% BSA and 0.02% sodium azide.
Source	Polyclonal, Rabbit,IgG
Purification	The antibody was affinity-purified from rabbit serum by affinity-chromatography using specific immunogen.
Dilution	WB 1: 500-2000
Concentration	1 mg/ml
Purity	≥90%
Storage Stability	-20°C/1 year
Synonyms	
Observed Band	
Cell Pathway	Cytoplasmic vesicle, phagosome membrane ; Peripheral membrane protein ; Cytoplasmic side . Late endosome membrane ; Peripheral membrane protein ; Cytoplasmic side . Lysosome membrane ; Peripheral membrane protein ; Cytoplasmic side . Melanosome membrane ; Peripheral membrane protein ; Cytoplasmic side . Cytoplasmic vesicle, autophagosome membrane ; Peripheral membrane protein ; Cytoplasmic side . Lipid droplet . Endosome membrane ; Peripheral membrane protein . Cytoplasmic vesicle . Mitochondrion membrane ; Peripheral membrane protein . Colocalizes with OSBPL1A at the late endosome (PubMed:16176980). Found in the ruffled border (a late endosomal-like compartment in the plasma membrane) of bone-resorbing osteoclasts. Recruited to phagosomes containing S.aureus or Mycobacterium (PubMed:21255)

Nanjing BYabscience technology Co.,Ltd

网址: www.njbybio.com

官方热线: 025-5229-8998

监督电话: 15950492658

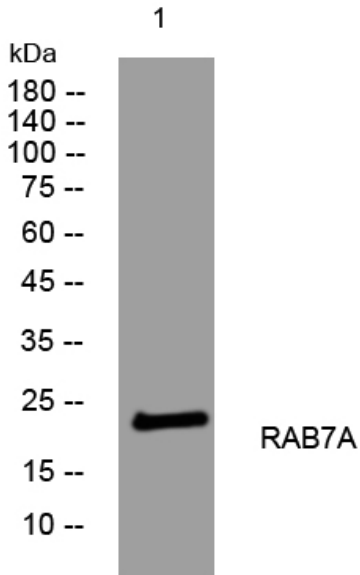


Tissue Specificity	Widely expressed; high expression found in skeletal muscle.
Function	disease:Defects in RAB7A are the cause of Charcot-Marie-Tooth disease type 2B (CMT2B) [MIM:600882]; also known as hereditary motor and sensory neuropathy II (HMSN2). CMT2B is a form of Charcot-Marie-Tooth disease, the most common inherited disorder of the peripheral nervous system. Charcot-Marie-Tooth disease is classified in two main groups on the basis of electrophysiologic properties and histopathology: primary peripheral demyelinating neuropathy or CMT1, and primary peripheral axonal neuropathy or CMT2. Neuropathies of the CMT2 group are characterized by signs of axonal regeneration in the absence of obvious myelin alterations, normal or slightly reduced nerve conduction velocities, and progressive distal muscle weakness and atrophy. CMT2B is clinically characterized by marked distal muscle weakness and a high frequency of foot ulcers, infections and amputations of the toes. CMT2B in
Background	RAB family members are small, RAS-related GTP-binding proteins that are important regulators of vesicular transport. Each RAB protein targets multiple proteins that act in exocytic / endocytic pathways. This gene encodes a RAB family member that regulates vesicle traffic in the late endosomes and also from late endosomes to lysosomes. This encoded protein is also involved in the cellular vacuolation of the VacA cytotoxin of Helicobacter pylori. Mutations at highly conserved amino acid residues in this gene have caused some forms of Charcot-Marie-Tooth (CMT) type 2 neuropathies. [provided by RefSeq, Jul 2008],
matters needing attention	Avoid repeated freezing and thawing!
Usage suggestions	This product can be used in immunological reaction related experiments. For more information, please consult technical personnel.

Nanjing BYabscience technology Co.,Ltd



Products Images



Western blot analysis of lysates from CACO2 cells,
primary antibody was diluted at 1:1000, 4° over night