



# TSG10 rabbit pAb

<b>Catalog No</b>	BYab-09017
<b>Isotype</b>	IgG
<b>Reactivity</b>	Human; Mouse;Rat
<b>Applications</b>	WB
<b>Gene Name</b>	TSGA10 CEP4L
<b>Protein Name</b>	TSG10
<b>Immunogen</b>	Synthesized peptide derived from human TSG10 AA range: 412-462
<b>Specificity</b>	This antibody detects endogenous levels of TSG10 at Human/Mouse/Rat
<b>Formulation</b>	Liquid in PBS containing 50% glycerol, 0.5% BSA and 0.02% sodium azide.
<b>Source</b>	Polyclonal, Rabbit,IgG
<b>Purification</b>	The antibody was affinity-purified from rabbit serum by affinity-chromatography using specific immunogen.
<b>Dilution</b>	WB 1: 500-2000
<b>Concentration</b>	1 mg/ml
<b>Purity</b>	≥90%
<b>Storage Stability</b>	-20°C/1 year
<b>Synonyms</b>	
<b>Observed Band</b>	
<b>Cell Pathway</b>	Cytoplasm . Cytoplasm, cytoskeleton, microtubule organizing center, centrosome, centriole . In mature spermatozoa, localizes to the centriole and midpiece (PubMed:28905369). The 27-kDa peptide associates with the fibrous sheath in mature spermatozoa and localizes to the principal piece of sperm tail, while the 55-kDa peptide localizes to the midpiece (By similarity). Detected in the cytoplasm of almost all spermatogonial cells within the seminiferous tubules (By similarity). .
<b>Tissue Specificity</b>	Expressed in the testis, in spermatozoa (at protein level) (PubMed:11179690, PubMed:28905369). Expressed in actively dividing fetal tissues, including sternum, intestine, limb, kidney and stomach (PubMed:14585816).
<b>Function</b>	function:May play a role in the sperm tail fibrous sheath, a major sperm tail structure.,PTM:Appears to be processed in a 27 kDa and a 55 kDa peptide containing respectively the N-terminal and the C-terminal part of the precursor.,similarity:Belongs to the CEP135/TSGA10 family.,subcellular location:The 27 kDa peptide associates with the fibrous sheath in mature spermatozoa and localizes to the principal piece of sperm tail while the 55 kDa

Nanjing BYabscience technology Co.,Ltd



peptide localizes to the midpiece.,tissue specificity:Testis specific.,

## Background

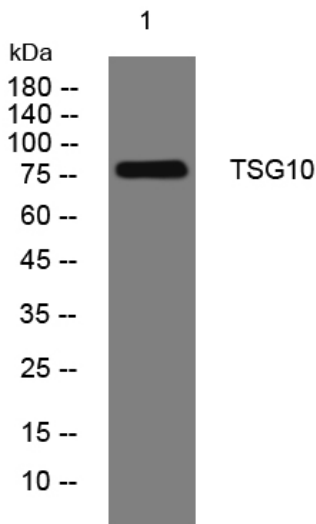
### matters needing attention

Avoid repeated freezing and thawing!

### Usage suggestions

This product can be used in immunological reaction related experiments. For more information, please consult technical personnel.

## Products Images



Western blot analysis of lysates from SW480 cells, primary antibody was diluted at 1:1000, 4° over night

Nanjing BYabscience technology Co.,Ltd