



CK085 rabbit pAb

Catalog No	BYab-09009
Isotype	IgG
Reactivity	Human; Mouse;Rat
Applications	WB
Gene Name	C11orf85
Protein Name	CK085
Immunogen	Synthesized peptide derived from human CK085 AA range: 58-108
Specificity	This antibody detects endogenous levels of CK085 at Human/Mouse/Rat
Formulation	Liquid in PBS containing 50% glycerol, 0.5% BSA and 0.02% sodium azide.
Source	Polyclonal, Rabbit,IgG
Purification	The antibody was affinity-purified from rabbit serum by affinity-chromatography using specific immunogen.
Dilution	WB 1: 500-2000
Concentration	1 mg/ml
Purity	≥90%
Storage Stability	-20°C/1 year
Synonyms	
Observed Band	
Cell Pathway	Nucleus inner membrane ; Single-pass membrane protein . Chromosome, telomere . In leptotene spermatocytes, localizes to telomeres that localize to the nucleus inner membrane. .
Tissue Specificity	
Function	
Background	
matters needing attention	Avoid repeated freezing and thawing!

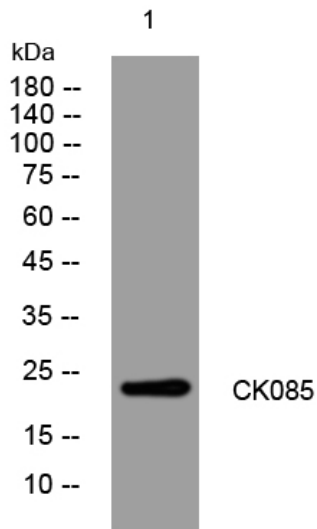
Nanjing BYabscience technology Co.,Ltd



Usage suggestions

This product can be used in immunological reaction related experiments. For more information, please consult technical personnel.

Products Images



Western blot analysis of lysates from A431 cells, primary antibody was diluted at 1:1000, 4° over night