



CPNE5 rabbit pAb

Catalog No	BYab-09007
Isotype	IgG
Reactivity	Human; Mouse
Applications	WB
Gene Name	CPNE5 KIAA1599
Protein Name	CPNE5
Immunogen	Synthesized peptide derived from human CPNE5 AA range: 191-241
Specificity	This antibody detects endogenous levels of CPNE5 at Human/Mouse
Formulation	Liquid in PBS containing 50% glycerol, 0.5% BSA and 0.02% sodium azide.
Source	Polyclonal, Rabbit,IgG
Purification	The antibody was affinity-purified from rabbit serum by affinity-chromatography using specific immunogen.
Dilution	WB 1: 500-2000
Concentration	1 mg/ml
Purity	≥90%
Storage Stability	-20°C/1 year
Synonyms	
Observed Band	
Cell Pathway	Perikaryon . Cell projection .
Tissue Specificity	Expressed in the brain, heart, stomach, spleen, lymph node and testis (PubMed:12949241). Expressed in melanocytes (PubMed:23999003).
Function	function:May function in membrane trafficking. Exhibits calcium-dependent phospholipid binding properties.,similarity:Belongs to the copine family.,similarity:Contains 1 VWFA domain.,similarity:Contains 2 C2 domains.,
Background	Calcium-dependent membrane-binding proteins may regulate molecular events at the interface of the cell membrane and cytoplasm. This gene is one of several genes that encode a calcium-dependent protein containing two N-terminal type II C2 domains and an integrin A domain-like sequence in the C-terminus. Several alternatively spliced transcript variants encoding different isoforms have been found for this gene. More variants may exist, but their full-length natures could not be determined. [provided by RefSeq, Sep 2015],

Nanjing BYabscience technology Co.,Ltd



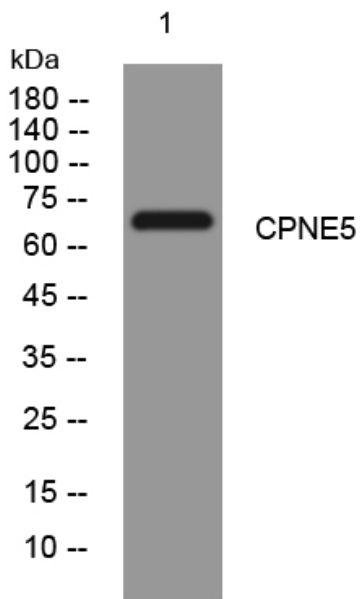
matters needing attention

Avoid repeated freezing and thawing!

Usage suggestions

This product can be used in immunological reaction related experiments. For more information, please consult technical personnel.

Products Images



Western blot analysis of lysates from SH-SY5Y cells, primary antibody was diluted at 1:1000, 4° over night