



KRA81 rabbit pAb

Catalog No	BYab-08999
Isotype	IgG
Reactivity	Human; Mouse
Applications	IHC;IF
Gene Name	KRTAP8-1 KAP8.1 KRTAP8.1
Protein Name	KRA81
Immunogen	Synthesized peptide derived from human KRA81 AA range: 13-63
Specificity	This antibody detects endogenous levels of KRA81 at Human/Mouse
Formulation	Liquid in PBS containing 50% glycerol, 0.5% BSA and 0.02% sodium azide.
Source	Polyclonal, Rabbit,IgG
Purification	The antibody was affinity-purified from rabbit serum by affinity-chromatography using specific immunogen.
Dilution	IHC-p 1: 50-200. IF 1:50-200
Concentration	1 mg/ml
Purity	≥90%
Storage Stability	-20°C/1 year
Synonyms	
Observed Band	
Cell Pathway	intermediate filament,
Tissue Specificity	Is essentially restricted to only one vertical half of the hair forming compartment and in beard hairs is absent from the central medulla.
Function	function:In the hair cortex, hair keratin intermediate filaments are embedded in an interfilamentous matrix, consisting of hair keratin-associated proteins (KRTAP), which are essential for the formation of a rigid and resistant hair shaft through their extensive disulfide bond cross-linking with abundant cysteine residues of hair keratins. The matrix proteins include the high-sulfur and high-glycine-tyrosine keratins.,similarity:Belongs to the KRTAP type 8 family.,subunit:Interacts with hair keratins.,tissue specificity:Is essentially restricted to only one vertical half of the hair forming compartment and in beard hairs is absent from the central medulla.,

Background

Nanjing BYabscience technology Co.,Ltd



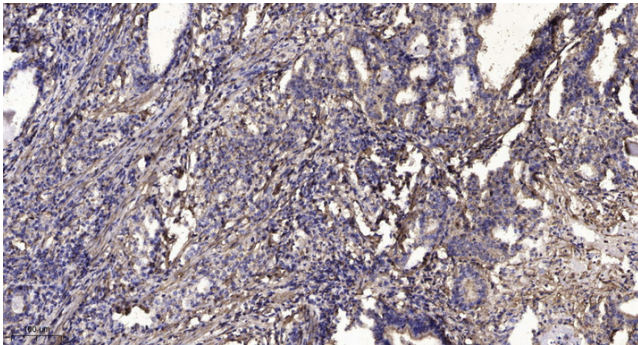
matters needing attention

Avoid repeated freezing and thawing!

Usage suggestions

This product can be used in immunological reaction related experiments. For more information, please consult technical personnel.

Products Images



Immunohistochemical analysis of paraffin-embedded human Gastric adenocarcinoma. 1, Antibody was diluted at 1:200(4° overnight). 2, Tris-EDTA,pH9.0 was used for antigen retrieval. 3,Secondary antibody was diluted at 1:200(room temperature, 45min).