



NEPR1 rabbit pAb

Catalog No	BYab-08998
Isotype	IgG
Reactivity	Human; Mouse
Applications	WB
Gene Name	CNEP1R1 C16orf69 TMEM188
Protein Name	NEPR1
Immunogen	Synthesized peptide derived from human NEPR1 AA range: 25-75
Specificity	This antibody detects endogenous levels of NEPR1 at Human/Mouse
Formulation	Liquid in PBS containing 50% glycerol, 0.5% BSA and 0.02% sodium azide.
Source	Polyclonal, Rabbit,IgG
Purification	The antibody was affinity-purified from rabbit serum by affinity-chromatography using specific immunogen.
Dilution	WB 1: 500-2000
Concentration	1 mg/ml
Purity	≥90%
Storage Stability	-20°C/1 year
Synonyms	
Observed Band	
Cell Pathway	Nucleus membrane ; Multi-pass membrane protein . Cytoplasm . Filamentous pattern in the cytoplasm.
Tissue Specificity	Muscle specific with lower expression in other metabolic tissues.
Function	similarity:Belongs to the UPF0427 family.,
Background	This gene encodes a transmembrane protein that belongs to the Tmemb_18A family. A similar protein in yeast is a component of an endoplasmic reticulum-associated protein phosphatase complex and is thought to play a role in the synthesis of triacylglycerol. Alternate splicing results in multiple transcript variants. [provided by RefSeq, Aug 2013],
matters needing attention	Avoid repeated freezing and thawing!

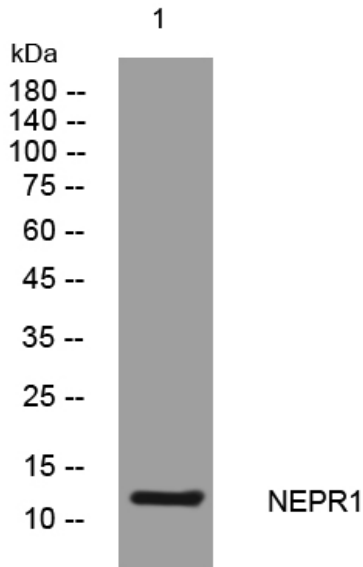
Nanjing BYabscience technology Co.,Ltd



Usage suggestions

This product can be used in immunological reaction related experiments. For more information, please consult technical personnel.

Products Images



Western blot analysis of lysates from A549 cells, primary antibody was diluted at 1:1000, 4° over night