



DIP2A rabbit pAb

| | |
|---------------------------|--|
| Catalog No | BYab-08994 |
| Isotype | IgG |
| Reactivity | Human; Mouse |
| Applications | WB |
| Gene Name | DIP2A C21orf106 DIP2 KIAA0184 |
| Protein Name | DIP2A |
| Immunogen | Synthesized peptide derived from human DIP2A AA range: 1080-1130 |
| Specificity | This antibody detects endogenous levels of DIP2A at Human/Mouse |
| Formulation | Liquid in PBS containing 50% glycerol, 0.5% BSA and 0.02% sodium azide. |
| Source | Polyclonal, Rabbit,IgG |
| Purification | The antibody was affinity-purified from rabbit serum by affinity-chromatography using specific immunogen. |
| Dilution | WB 1: 500-2000 |
| Concentration | 1 mg/ml |
| Purity | ≥90% |
| Storage Stability | -20°C/1 year |
| Synonyms | |
| Observed Band | |
| Cell Pathway | Cell membrane ; Peripheral membrane protein . Mitochondrion . Cell projection, dendritic spine . |
| Tissue Specificity | Low expression in all tissues tested. |
| Function | function:May provide positional cues for axon pathfinding and patterning in the central nervous system.,similarity:Belongs to the DIP2 family.,tissue specificity:Low expression in all tissues tested., |
| Background | The protein encoded by this gene may be involved in axon patterning in the central nervous system. This gene is not highly expressed. Several transcript variants encoding different isoforms have been found for this gene. [provided by RefSeq, Mar 2009], |

Nanjing BYabscience technology Co.,Ltd



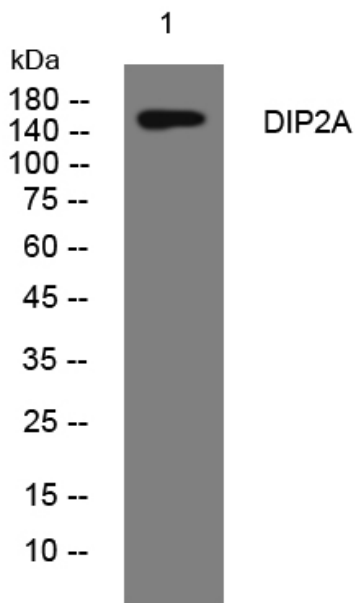
matters needing attention

Avoid repeated freezing and thawing!

Usage suggestions

This product can be used in immunological reaction related experiments. For more information, please consult technical personnel.

Products Images



Western blot analysis of lysates from HeLa cells, primary antibody was diluted at 1:1000, 4° over night