



# SIA7B rabbit pAb

<b>Catalog No</b>	BYab-08987
<b>Isotype</b>	IgG
<b>Reactivity</b>	Human; Mouse
<b>Applications</b>	WB
<b>Gene Name</b>	ST6GALNAC2 SIAT7B SIATL1 STHM
<b>Protein Name</b>	SIA7B
<b>Immunogen</b>	Synthesized peptide derived from human SIA7B AA range: 219-269
<b>Specificity</b>	This antibody detects endogenous levels of SIA7B at Human/Mouse
<b>Formulation</b>	Liquid in PBS containing 50% glycerol, 0.5% BSA and 0.02% sodium azide.
<b>Source</b>	Polyclonal, Rabbit,IgG
<b>Purification</b>	The antibody was affinity-purified from rabbit serum by affinity-chromatography using specific immunogen.
<b>Dilution</b>	WB 1: 500-2000
<b>Concentration</b>	1 mg/ml
<b>Purity</b>	≥90%
<b>Storage Stability</b>	-20°C/1 year
<b>Synonyms</b>	
<b>Observed Band</b>	
<b>Cell Pathway</b>	Golgi apparatus membrane ; Single-pass type II membrane protein .
<b>Tissue Specificity</b>	Expressed in skeletal muscle, heart, kidney, placenta, lung and leukocytes.
<b>Function</b>	catalytic activity: CMP-N-acetylneuraminate + glycano-beta-D-galactosyl-1,3-(N-acetyl-D-galactosaminyI)-glycoprotein = CMP + glycano-beta-D-galactosyl-(2,6-alpha-N-acetylneuraminyI)-(N-acetyl-D-galactosaminyI)-glycoprotein.,online information:GlycoGene database,online information:ST6GalNAc II,pathway:Protein modification; protein glycosylation.,similarity:Belongs to the glycosyltransferase 29 family.,tissue specificity:Expressed in skeletal muscle, heart, kidney, placenta, lung and leukocytes.,
<b>Background</b>	ST6GALNAC2 belongs to a family of sialyltransferases that add sialic acids to the nonreducing ends of glycoconjugates. At the cell surface, these modifications have roles in cell-cell and cell-substrate interactions, bacterial adhesion, and

**Nanjing BYabscience technology Co.,Ltd**



protein targeting (Samyn-Petit et al., 2000 [PubMed 10742600]).[supplied by OMIM, Mar 2008],

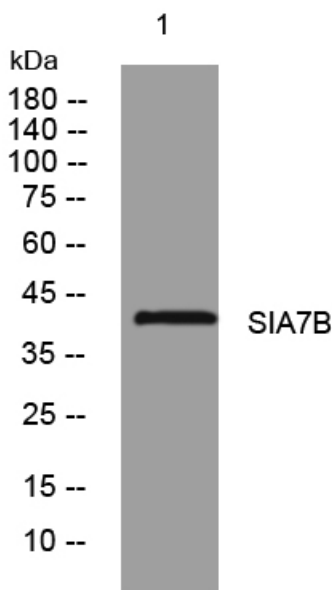
**matters needing attention**

Avoid repeated freezing and thawing!

**Usage suggestions**

This product can be used in immunological reaction related experiments. For more information, please consult technical personnel.

## Products Images



Western blot analysis of lysates from 3T3 cells, primary antibody was diluted at 1:1000, 4° over night