



# ACTT1 rabbit pAb

<b>Catalog No</b>	BYab-08975
<b>Isotype</b>	IgG
<b>Reactivity</b>	Human; Mouse;Rat
<b>Applications</b>	WB
<b>Gene Name</b>	ACTRT1 ARPT1 HSD27
<b>Protein Name</b>	ACTT1
<b>Immunogen</b>	Synthesized peptide derived from human ACTT1 AA range: 241-291
<b>Specificity</b>	This antibody detects endogenous levels of ACTT1 at Human/Mouse/Rat
<b>Formulation</b>	Liquid in PBS containing 50% glycerol, 0.5% BSA and 0.02% sodium azide.
<b>Source</b>	Polyclonal, Rabbit,IgG
<b>Purification</b>	The antibody was affinity-purified from rabbit serum by affinity-chromatography using specific immunogen.
<b>Dilution</b>	WB 1: 500-2000
<b>Concentration</b>	1 mg/ml
<b>Purity</b>	≥90%
<b>Storage Stability</b>	-20°C/1 year
<b>Synonyms</b>	
<b>Observed Band</b>	
<b>Cell Pathway</b>	Cytoplasm, cytoskeleton . Cytoplasm . Nucleus . Both detected in the nucleus and cytoplasm, localizes to the nucleus where it binds chromatin upon stimulation of the Hedgehog pathway. .
<b>Tissue Specificity</b>	In skin, expressed in the basal, spinous and granular layers of the epidermis. Also expressed in hair follicles, sebaceous glands, eccrine sweat glands and semen.
<b>Function</b>	similarity:Belongs to the actin family.,
<b>Background</b>	This gene encodes a protein related to the cytoskeletal protein beta-actin. This protein is a major component of the calyx in the perinuclear theca of mammalian sperm heads, and it therefore likely functions in spermatid formation. This gene is intronless and is similar to a related gene located on chromosome 1. A related pseudogene has also been identified approximately 75 kb downstream of this gene on chromosome X. [provided by RefSeq, May 2010],

Nanjing BYabscience technology Co.,Ltd



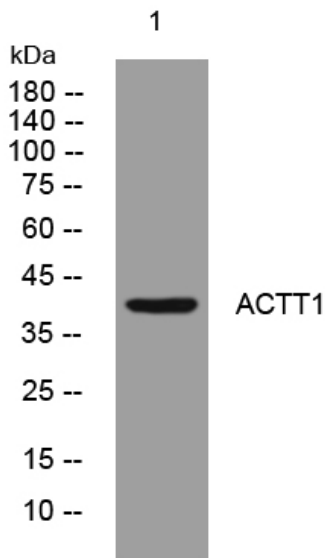
**matters needing attention**

Avoid repeated freezing and thawing!

**Usage suggestions**

This product can be used in immunological reaction related experiments. For more information, please consult technical personnel.

## Products Images



Western blot analysis of lysates from 293T cells, primary antibody was diluted at 1:1000, 4° over night