



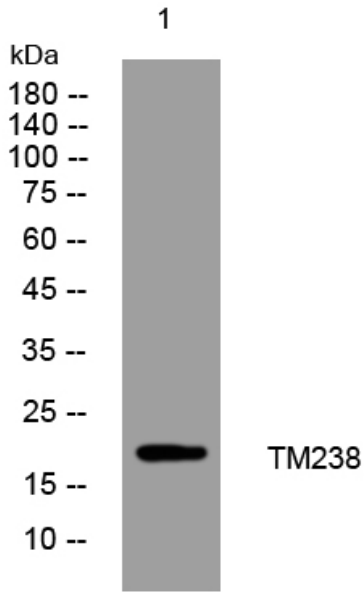
TM238 rabbit pAb

Catalog No	BYab-08968
Isotype	IgG
Reactivity	Human; Mouse
Applications	WB
Gene Name	TMEM238
Protein Name	TM238
Immunogen	Synthesized peptide derived from human TM238 AA range: 59-109
Specificity	This antibody detects endogenous levels of TM238 at Human/Mouse
Formulation	Liquid in PBS containing 50% glycerol, 0.5% BSA and 0.02% sodium azide.
Source	Polyclonal, Rabbit,IgG
Purification	The antibody was affinity-purified from rabbit serum by affinity-chromatography using specific immunogen.
Dilution	WB 1: 500-2000
Concentration	1 mg/ml
Purity	≥90%
Storage Stability	-20°C/1 year
Synonyms	
Observed Band	
Cell Pathway	Membrane ; Multi-pass membrane protein .
Tissue Specificity	
Function	
Background	
matters needing attention	Avoid repeated freezing and thawing!
Usage suggestions	This product can be used in immunological reaction related experiments. For more information, please consult technical personnel.

Nanjing BYabscience technology Co.,Ltd



Products Images



Western blot analysis of lysates from CACO2 cells,
primary antibody was diluted at 1:1000, 4° over night