



RHBL3 rabbit pAb

Catalog No	BYab-08967
Isotype	IgG
Reactivity	Human; Mouse
Applications	WB
Gene Name	RHBDL3 RHBDL4 VRHO
Protein Name	RHBL3
Immunogen	Synthesized peptide derived from human RHBL3 AA range: 31-81
Specificity	This antibody detects endogenous levels of RHBL3 at Human/Mouse
Formulation	Liquid in PBS containing 50% glycerol, 0.5% BSA and 0.02% sodium azide.
Source	Polyclonal, Rabbit,IgG
Purification	The antibody was affinity-purified from rabbit serum by affinity-chromatography using specific immunogen.
Dilution	WB 1: 500-2000
Concentration	1 mg/ml
Purity	≥90%
Storage Stability	-20°C/1 year
Synonyms	
Observed Band	
Cell Pathway	Membrane ; Multi-pass membrane protein .
Tissue Specificity	
Function	catalytic activity: Cleaves type-1 transmembrane domains using a catalytic dyad composed of serine and histidine that are contributed by different transmembrane domains.,function: May be involved in regulated intramembrane proteolysis and the subsequent release of functional polypeptides from their membrane anchors.,similarity: Belongs to the peptidase S54 family.,similarity: Contains 2 EF-hand domains.,
Background	
matters needing attention	Avoid repeated freezing and thawing!

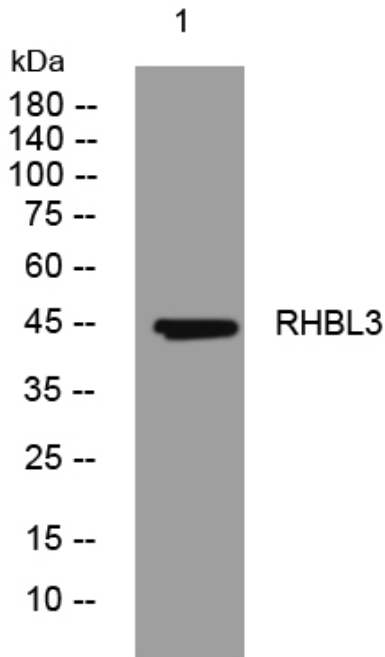
Nanjing BYabscience technology Co.,Ltd



Usage suggestions

This product can be used in immunological reaction related experiments. For more information, please consult technical personnel.

Products Images



Western blot analysis of lysates from MCF-7 cells, primary antibody was diluted at 1:1000, 4° over night