



# SG1D1 rabbit pAb

<b>Catalog No</b>	BYab-08958
<b>Isotype</b>	IgG
<b>Reactivity</b>	Human;Rat;Mouse;
<b>Applications</b>	IHC;IF
<b>Gene Name</b>	SCGB1D1 LIPHA
<b>Protein Name</b>	SG1D1
<b>Immunogen</b>	Synthesized peptide derived from human SG1D1 AA range: 18-68
<b>Specificity</b>	This antibody detects endogenous levels of SG1D1 at Human
<b>Formulation</b>	Liquid in PBS containing 50% glycerol, 0.5% BSA and 0.02% sodium azide.
<b>Source</b>	Polyclonal, Rabbit,IgG
<b>Purification</b>	The antibody was affinity-purified from rabbit serum by affinity-chromatography using specific immunogen.
<b>Dilution</b>	IHC-p 1: 50-200. IF 1:50-200
<b>Concentration</b>	1 mg/ml
<b>Purity</b>	≥90%
<b>Storage Stability</b>	-20°C/1 year
<b>Synonyms</b>	
<b>Observed Band</b>	
<b>Cell Pathway</b>	Secreted .
<b>Tissue Specificity</b>	Expressed in lachrymal gland, thymus, kidney, testis, ovary and salivary gland.
<b>Function</b>	function:May bind androgens and other steroids, may also bind estramustine, a chemotherapeutic agent used for prostate cancer. May be under transcriptional regulation of steroid hormones.,mass spectrometry: PubMed:9720917,similarity:Belongs to the secretoglobin family. Lipophilin subfamily.,subunit:Heterodimer of a lipophilin A and a lipophilin C (mammaglobin B) monomer associated head to head.,tissue specificity:Expressed in lachrymal gland, thymus, kidney, testis, ovary and salivary gland.,
<b>Background</b>	The protein encoded by this gene is a member of the lipophilin subfamily, part of the uteroglobin superfamily, and is an ortholog of prostatein, the major secretory glycoprotein of the rat ventral prostate gland. This gene product represents one component of a heterodimeric molecule present in human tears whose elution

Nanjing BYabscience technology Co.,Ltd



profile is consistent with prostatein, a tetrameric molecule composed of three peptide components in heterodimers. Assuming that human lipophilins are the functional counterparts of prostatein, they may be transcriptionally regulated by steroid hormones, with the ability to bind androgens, other steroids and possibly bind and concentrate estramustine, a chemotherapeutic agent widely used for prostate cancer. Although the gene has been reported to be on chromosome 15, this sequence appears to be from a cluster of genes on chromosome 11 that includes mammaglobin 2. [provided by RefSeq, Jul 2008],

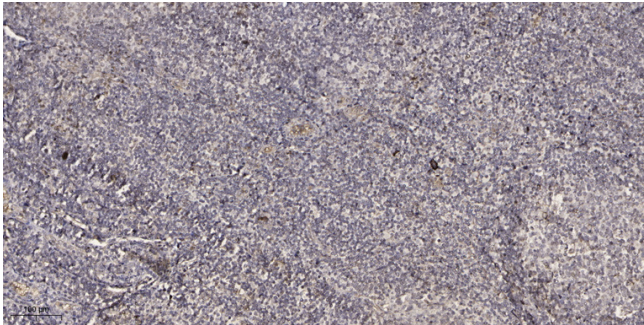
**matters needing attention**

Avoid repeated freezing and thawing!

**Usage suggestions**

This product can be used in immunological reaction related experiments. For more information, please consult technical personnel.

## Products Images



Immunohistochemical analysis of paraffin-embedded human tonsil. 1, Antibody was diluted at 1:200(4° overnight). 2, Tris-EDTA,pH9.0 was used for antigen retrieval. 3,Secondary antibody was diluted at 1:200(room temperature, 30min).