



STB5L rabbit pAb

Catalog No	BYab-08957
Isotype	IgG
Reactivity	Human; Mouse
Applications	WB
Gene Name	STXBP5L KIAA1006 LLGL4
Protein Name	STB5L
Immunogen	Synthesized peptide derived from human STB5L AA range: 990-1040
Specificity	This antibody detects endogenous levels of STB5L at Human/Mouse
Formulation	Liquid in PBS containing 50% glycerol, 0.5% BSA and 0.02% sodium azide.
Source	Polyclonal, Rabbit,IgG
Purification	The antibody was affinity-purified from rabbit serum by affinity-chromatography using specific immunogen.
Dilution	WB 1: 500-2000
Concentration	1 mg/ml
Purity	≥90%
Storage Stability	-20°C/1 year
Synonyms	
Observed Band	
Cell Pathway	Cytoplasm . Cell membrane ; Peripheral membrane protein . Membrane ; Peripheral membrane protein . Cytoplasmic, and associated with vesicular membranes and the plasma membrane. .
Tissue Specificity	Detected in kidney, hippocampus and lung carcinoma.
Function	function:May play a role in vesicle trafficking and exocytosis .,similarity:Belongs to the WD repeat L(2)GL family.,similarity:Contains 1 v-SNARE coiled-coil homology domain.,similarity:Contains 14 WD repeats.,subcellular location:Cytoplasmic, and associated with vesicular membranes and the plasma membrane.,tissue specificity:Detected in kidney, hippocampus and lung carcinoma.,
Background	
matters needing attention	Avoid repeated freezing and thawing!

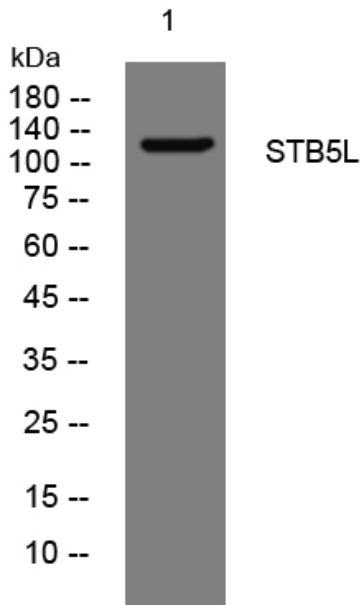
Nanjing BYabscience technology Co.,Ltd



Usage suggestions

This product can be used in immunological reaction related experiments. For more information, please consult technical personnel.

Products Images



Western blot analysis of lysates from CACO2 cells, primary antibody was diluted at 1:1000, 4° over night