



# MS4A7 rabbit pAb

<b>Catalog No</b>	BYab-08954
<b>Isotype</b>	IgG
<b>Reactivity</b>	Human;Rat;Mouse;
<b>Applications</b>	WB
<b>Gene Name</b>	MS4A7 4SPAN2 CD20L4 CFFM4
<b>Protein Name</b>	MS4A7
<b>Immunogen</b>	Synthesized peptide derived from human MS4A7 AA range: 3-53
<b>Specificity</b>	This antibody detects endogenous levels of MS4A7 at Human
<b>Formulation</b>	Liquid in PBS containing 50% glycerol, 0.5% BSA and 0.02% sodium azide.
<b>Source</b>	Polyclonal, Rabbit,IgG
<b>Purification</b>	The antibody was affinity-purified from rabbit serum by affinity-chromatography using specific immunogen.
<b>Dilution</b>	WB 1: 500-2000
<b>Concentration</b>	1 mg/ml
<b>Purity</b>	≥90%
<b>Storage Stability</b>	-20°C/1 year
<b>Synonyms</b>	
<b>Observed Band</b>	
<b>Cell Pathway</b>	Membrane; Multi-pass membrane protein.
<b>Tissue Specificity</b>	Ubiquitous expression in normal tissues. Expression is more elevated in adult liver, lung, spleen, and heart than in their fetal counterparts, and is higher in normal tissues than in the cancerous tissue or cell lines. Low levels of expression were detected in the promonocytic stage, whereas high levels of expression were detected in mature monocytes.
<b>Function</b>	function:May be involved in signal transduction as a component of a multimeric receptor complex.,similarity:Belongs to the MS4A family.,tissue specificity:Ubiquitous expression in normal tissues. Expression is more elevated in adult liver, lung, spleen, and heart than in their fetal counterparts, and is higher in normal tissues than in the cancerous tissue or cell lines. Low levels of expression were detected in the promonocytic stage, whereas high levels of expression were detected in mature monocytes.,

Nanjing BYabscience technology Co.,Ltd



### Background

This gene encodes a member of the membrane-spanning 4A gene family, members of which are characterized by common structural features and similar intron/exon splice boundaries and display unique expression patterns in hematopoietic cells and nonlymphoid tissues. This family member is associated with mature cellular function in the monocytic lineage, and it may be a component of a receptor complex involved in signal transduction. This gene is localized to 11q12, in a cluster of other family members. At least four alternatively spliced transcript variants encoding two distinct isoforms have been observed. [provided by RefSeq, Jul 2008],

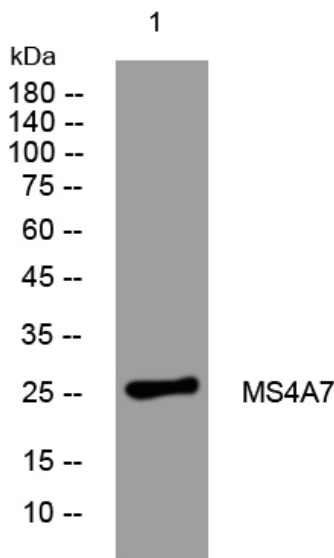
### matters needing attention

Avoid repeated freezing and thawing!

### Usage suggestions

This product can be used in immunological reaction related experiments. For more information, please consult technical personnel.

## Products Images



Western blot analysis of lysates from HeLa cells, primary antibody was diluted at 1:1000, 4° over night