



# SRPX rabbit pAb

<b>Catalog No</b>	BYab-08937
<b>Isotype</b>	IgG
<b>Reactivity</b>	Human; Mouse;Rat
<b>Applications</b>	WB
<b>Gene Name</b>	SRPX ETX1
<b>Protein Name</b>	SRPX
<b>Immunogen</b>	Synthesized peptide derived from human SRPX AA range: 234-284
<b>Specificity</b>	This antibody detects endogenous levels of SRPX at Human/Mouse/Rat
<b>Formulation</b>	Liquid in PBS containing 50% glycerol, 0.5% BSA and 0.02% sodium azide.
<b>Source</b>	Polyclonal, Rabbit,IgG
<b>Purification</b>	The antibody was affinity-purified from rabbit serum by affinity-chromatography using specific immunogen.
<b>Dilution</b>	WB 1: 500-2000
<b>Concentration</b>	1 mg/ml
<b>Purity</b>	≥90%
<b>Storage Stability</b>	-20°C/1 year
<b>Synonyms</b>	
<b>Observed Band</b>	
<b>Cell Pathway</b>	Cell surface . Possibly surface of photoreceptor cell.
<b>Tissue Specificity</b>	Retina and heart; less in placenta, pancreas, lung, liver, skeletal muscle, kidney and brain.
<b>Function</b>	alternative products:Additional isoforms seem to exist,function:May be involved in phagocytosis during disk shedding, cell adhesion to cells other than the pigment epithelium or signal transduction.,similarity:Contains 1 HYR domain.,similarity:Contains 3 Sushi (CCP/SCR) domains.,subcellular location:Possibly surface of photoreceptor cell.,tissue specificity:Retina and heart; less in placenta, pancreas, lung, liver, skeletal muscle, kidney and brain.,
<b>Background</b>	
<b>matters needing attention</b>	Avoid repeated freezing and thawing!

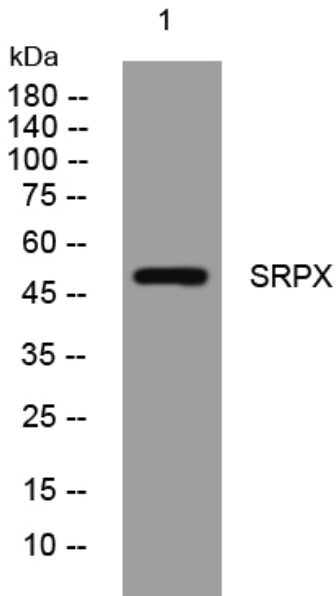
Nanjing BYabscience technology Co.,Ltd



**Usage suggestions**

This product can be used in immunological reaction related experiments. For more information, please consult technical personnel.

**Products Images**



Western blot analysis of lysates from KB cells, primary antibody was diluted at 1:1000, 4°over night