



RGL3 rabbit pAb

Catalog No	BYab-08932
Isotype	IgG
Reactivity	Human; Mouse
Applications	WB
Gene Name	RGL3
Protein Name	RGL3
Immunogen	Synthesized peptide derived from human RGL3 AA range: 601-651
Specificity	This antibody detects endogenous levels of RGL3 at Human/Mouse
Formulation	Liquid in PBS containing 50% glycerol, 0.5% BSA and 0.02% sodium azide.
Source	Polyclonal, Rabbit,IgG
Purification	The antibody was affinity-purified from rabbit serum by affinity-chromatography using specific immunogen.
Dilution	WB 1: 500-2000
Concentration	1 mg/ml
Purity	≥90%
Storage Stability	-20°C/1 year
Synonyms	
Observed Band	
Cell Pathway	intracellular,
Tissue Specificity	
Function	domain:The Ras-associating domain plays a central role in the activation of Ral-A GDP/GTP exchange activity.,function:Guanine nucleotide exchange factor (GEF) for Ral-A. Potential effector of GTPase HRas and Ras-related protein M-Ras. Negatively regulates Elk-1-dependent gene induction downstream of HRas and MEKK1.,similarity:Contains 1 N-terminal Ras-GEF domain.,similarity:Contains 1 Ras-associating domain.,similarity:Contains 1 Ras-GEF domain.,subunit:Interacts with GTP-bound forms of RIT1, HRAS and MRAS.,
Background	

Nanjing BYabscience technology Co.,Ltd



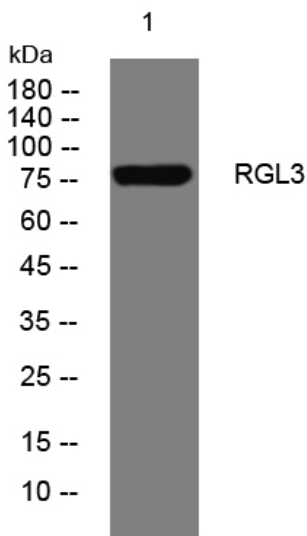
matters needing attention

Avoid repeated freezing and thawing!

Usage suggestions

This product can be used in immunological reaction related experiments. For more information, please consult technical personnel.

Products Images



Western blot analysis of lysates from HeLa cells, primary antibody was diluted at 1:1000, 4° over night