



# BTBD1 rabbit pAb

<b>Catalog No</b>	BYab-08930
<b>Isotype</b>	IgG
<b>Reactivity</b>	Human; Mouse
<b>Applications</b>	WB
<b>Gene Name</b>	BTBD1 C15orf1 NS5ATP8
<b>Protein Name</b>	BTBD1
<b>Immunogen</b>	Synthesized peptide derived from human BTBD1 AA range: 115-165
<b>Specificity</b>	This antibody detects endogenous levels of BTBD1 at Human/Mouse
<b>Formulation</b>	Liquid in PBS containing 50% glycerol, 0.5% BSA and 0.02% sodium azide.
<b>Source</b>	Polyclonal, Rabbit,IgG
<b>Purification</b>	The antibody was affinity-purified from rabbit serum by affinity-chromatography using specific immunogen.
<b>Dilution</b>	WB 1: 500-2000
<b>Concentration</b>	1 mg/ml
<b>Purity</b>	≥90%
<b>Storage Stability</b>	-20°C/1 year
<b>Synonyms</b>	
<b>Observed Band</b>	
<b>Cell Pathway</b>	Cytoplasm . Localizes to punctate or elongated cytoplasmic bodies. .
<b>Tissue Specificity</b>	Ubiquitous; highest levels in testes, heart and skeletal muscle.
<b>Function</b>	caution:The sequence shown here is derived from an Ensembl automatic analysis pipeline and should be considered as preliminary data.,function:Probable substrate-specific adapter of an E3 ubiquitin-protein ligase complex which mediates the ubiquitination and subsequent proteasomal degradation of target proteins.,pathway:Protein modification; protein ubiquitination.,similarity:Contains 1 BTB (POZ) domain.,subcellular location:Cytoplasmic bodies.,subunit:Interacts with topoisomerase 1 and with TRIM5 isoform Delta. Interacts with CUL3.,tissue specificity:Ubiquitous; higher levels in heart and skeletal muscle.,
<b>Background</b>	The C-terminus of the protein encoded by this gene binds topoisomerase I. The N-terminus contains a proline-rich region and a BTB/POZ domain (broad-complex, Tramtrack and bric a brac/Pox virus and Zinc finger), both of

Nanjing BYabscience technology Co.,Ltd



which are typically involved in protein-protein interactions. Subcellularly, the protein localizes to cytoplasmic bodies. Alternative splicing results in multiple transcript variants encoding different isoforms. [provided by RefSeq, Jul 2008],

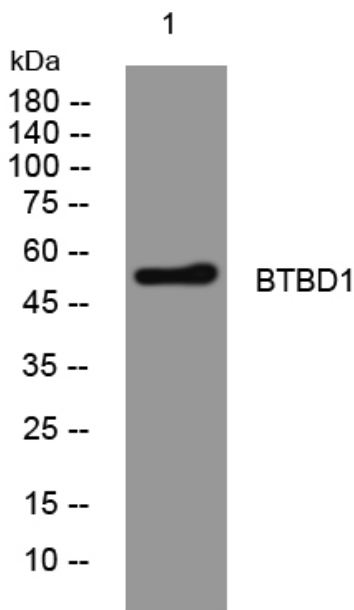
**matters needing attention**

Avoid repeated freezing and thawing!

**Usage suggestions**

This product can be used in immunological reaction related experiments. For more information, please consult technical personnel.

## Products Images



Western blot analysis of lysates from HuvEc cells, primary antibody was diluted at 1:1000, 4° over night