



SPRE3 rabbit pAb

Catalog No	BYab-08917
Isotype	IgG
Reactivity	Human; Mouse
Applications	WB
Gene Name	SPRED3 EVE-3
Protein Name	SPRE3
Immunogen	Synthesized peptide derived from human SPRE3 AA range: 311-361
Specificity	This antibody detects endogenous levels of SPRE3 at Human/Mouse
Formulation	Liquid in PBS containing 50% glycerol, 0.5% BSA and 0.02% sodium azide.
Source	Polyclonal, Rabbit,IgG
Purification	The antibody was affinity-purified from rabbit serum by affinity-chromatography using specific immunogen.
Dilution	WB 1: 500-2000
Concentration	1 mg/ml
Purity	≥90%
Storage Stability	-20°C/1 year
Synonyms	
Observed Band	
Cell Pathway	Cell membrane ; Peripheral membrane protein .
Tissue Specificity	
Function	function:Tyrosine kinase substrate that inhibits growth-factor-mediated activation of MAP kinase.,PTM:Phosphorylated on tyrosine.,similarity:Contains 1 SPR (sprouty) domain.,similarity:Contains 1 WH1 domain.,subunit:Interacts with Ras.,
Background	This gene encodes a protein with a C-terminal Sprouty-like cysteine-rich domain (SRY) and an N-terminal Ena/Vasodilator-stimulated phosphoprotein (VASP) homology-1 (EVH-1) domain. The encoded protein is a member of a family of proteins that negatively regulates mitogen-activated protein (MAP) kinase signaling, particularly during organogenesis. Alternative splicing results in multiple transcript variants. [provided by RefSeq, Jul 2012],

Nanjing BYabscience technology Co.,Ltd



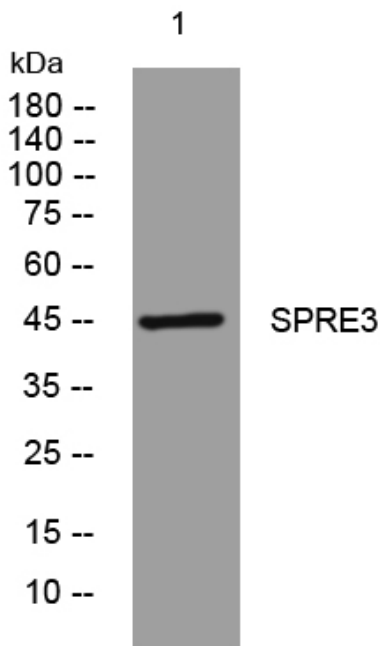
matters needing attention

Avoid repeated freezing and thawing!

Usage suggestions

This product can be used in immunological reaction related experiments. For more information, please consult technical personnel.

Products Images



Western blot analysis of lysates from K562 cells, primary antibody was diluted at 1:1000, 4° over night