



DJC12 rabbit pAb

Catalog No	BYab-08914
Isotype	IgG
Reactivity	Human; Mouse;Rat
Applications	WB
Gene Name	DNAJC12 JDP1
Protein Name	DJC12
Immunogen	Synthesized peptide derived from human DJC12 AA range: 148-198
Specificity	This antibody detects endogenous levels of DJC12 at Human/Mouse/Rat
Formulation	Liquid in PBS containing 50% glycerol, 0.5% BSA and 0.02% sodium azide.
Source	Polyclonal, Rabbit,IgG
Purification	The antibody was affinity-purified from rabbit serum by affinity-chromatography using specific immunogen.
Dilution	WB 1: 500-2000
Concentration	1 mg/ml
Purity	≥90%
Storage Stability	-20°C/1 year
Synonyms	
Observed Band	
Cell Pathway	[Isoform a]: Cytoplasm .
Tissue Specificity	Expressed at high levels in brain, heart, and testis, and at reduced levels in kidney and stomach.
Function	similarity:Contains 1 J domain.,tissue specificity:Expressed at high levels in brain, heart, and testis, and at reduced levels in kidney and stomach.,
Background	This gene encodes a member of a subclass of the HSP40/DnaJ protein family. Members of this family of proteins are associated with complex assembly, protein folding, and export. Two transcript variants encoding distinct isoforms have been identified for this gene. [provided by RefSeq, Jul 2008],
matters needing attention	Avoid repeated freezing and thawing!

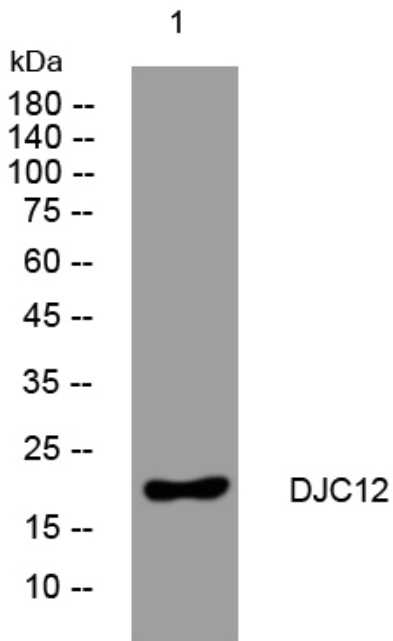
Nanjing BYabscience technology Co.,Ltd



Usage suggestions

This product can be used in immunological reaction related experiments. For more information, please consult technical personnel.

Products Images



Western blot analysis of lysates from A431 cells, primary antibody was diluted at 1:1000, 4° over night