



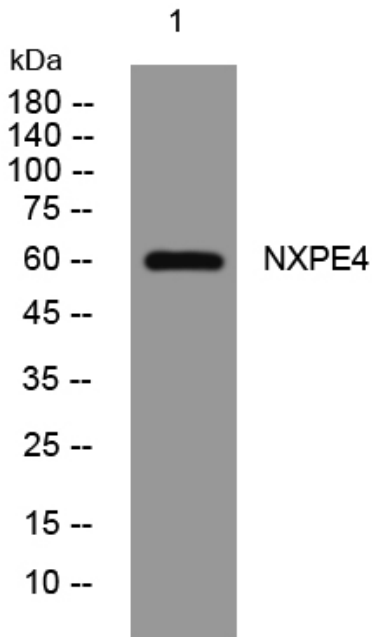
NXPE4 rabbit pAb

Catalog No	BYab-08913
Isotype	IgG
Reactivity	Human; Mouse;Rat
Applications	WB
Gene Name	NXPE4 C11orf33 FAM55D UNQ3018/PRO9799
Protein Name	NXPE4
Immunogen	Synthesized peptide derived from human NXPE4 AA range: 165-215
Specificity	This antibody detects endogenous levels of NXPE4 at Human/Mouse/Rat
Formulation	Liquid in PBS containing 50% glycerol, 0.5% BSA and 0.02% sodium azide.
Source	Polyclonal, Rabbit,IgG
Purification	The antibody was affinity-purified from rabbit serum by affinity-chromatography using specific immunogen.
Dilution	WB 1: 500-2000
Concentration	1 mg/ml
Purity	≥90%
Storage Stability	-20°C/1 year
Synonyms	
Observed Band	
Cell Pathway	Secreted .
Tissue Specificity	
Function	similarity:Belongs to the FAM55 family.,
Background	
matters needing attention	Avoid repeated freezing and thawing!
Usage suggestions	This product can be used in immunological reaction related experiments. For more information, please consult technical personnel.

Nanjing BYabscience technology Co.,Ltd



Products Images



Western blot analysis of lysates from SW480 cells,
primary antibody was diluted at 1:1000, 4° over night