



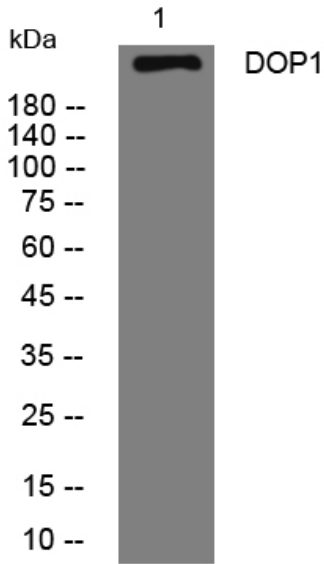
DOP1 rabbit pAb

Catalog No	BYab-08906
Isotype	IgG
Reactivity	Human; Mouse
Applications	WB
Gene Name	DOPEY1 KIAA1117
Protein Name	DOP1
Immunogen	Synthesized peptide derived from human DOP1 AA range: 1543-1593
Specificity	This antibody detects endogenous levels of DOP1 at Human/Mouse
Formulation	Liquid in PBS containing 50% glycerol, 0.5% BSA and 0.02% sodium azide.
Source	Polyclonal, Rabbit,IgG
Purification	The antibody was affinity-purified from rabbit serum by affinity-chromatography using specific immunogen.
Dilution	WB 1: 500-2000
Concentration	1 mg/ml
Purity	≥90%
Storage Stability	-20°C/1 year
Synonyms	
Observed Band	
Cell Pathway	Golgi apparatus membrane ; Peripheral membrane protein .
Tissue Specificity	
Function	function:May be involved in protein traffic between late Golgi and early endosomes.,similarity:Belongs to the dopey family.,
Background	
matters needing attention	Avoid repeated freezing and thawing!
Usage suggestions	This product can be used in immunological reaction related experiments. For more information, please consult technical personnel.

Nanjing BYabscience technology Co.,Ltd



Products Images



Western blot analysis of lysates from 3T3 cells, primary antibody was diluted at 1:1000, 4° over night