



GTR10 rabbit pAb

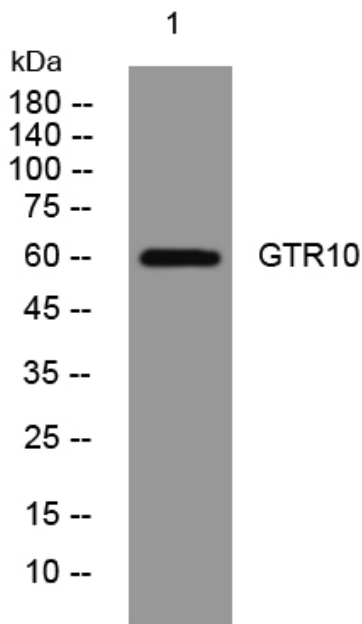
Catalog No	BYab-08896
Isotype	IgG
Reactivity	Human; Mouse
Applications	WB
Gene Name	SLC2A10 GLUT10
Protein Name	GTR10
Immunogen	Synthesized peptide derived from human GTR10 AA range: 233-283
Specificity	This antibody detects endogenous levels of GTR10 at Human/Mouse
Formulation	Liquid in PBS containing 50% glycerol, 0.5% BSA and 0.02% sodium azide.
Source	Polyclonal, Rabbit,IgG
Purification	The antibody was affinity-purified from rabbit serum by affinity-chromatography using specific immunogen.
Dilution	WB 1: 500-2000
Concentration	1 mg/ml
Purity	≥90%
Storage Stability	-20°C/1 year
Synonyms	
Observed Band	
Cell Pathway	Endomembrane system ; Multi-pass membrane protein . Cytoplasm, perinuclear region .
Tissue Specificity	Widely expressed; highest levels in liver and pancreas.
Function	disease:Defects in SLC2A10 are the cause of arterial tortuosity syndrome (ATS) [MIM:208050]. ATS is an autosomal recessive disorder characterized by tortuosity and elongation of major arteries, often resulting in death at young age. Other typical features include aneurysms of large arteries and stenosis of the pulmonary artery, in association with facial features and several connective tissue manifestations such as soft skin and joint laxity. Histopathological findings include fragmentation of elastic fibers in the tunica media of large arteries.,function:Facilitative glucose transporter.,similarity:Belongs to the major facilitator superfamily. Sugar transporter (TC 2.A.1.1) family. Glucose transporter subfamily.,tissue specificity:Widely expressed; highest levels in liver and pancreas.,

Nanjing BYabscience technology Co.,Ltd



Background	This gene encodes a member of the class III facilitative glucose transporter family. The encoded protein plays a role in regulation of glucose homeostasis. Mutations in this gene have been associated with arterial tortuosity syndrome.[provided by RefSeq, Dec 2009],
matters needing attention	Avoid repeated freezing and thawing!
Usage suggestions	This product can be used in immunological reaction related experiments. For more information, please consult technical personnel.

Products Images



Western blot analysis of lysates from HuvEc cells, primary antibody was diluted at 1:1000, 4° over night