



# SNX33 rabbit pAb

<b>Catalog No</b>	BYab-08888
<b>Isotype</b>	IgG
<b>Reactivity</b>	Human; Mouse
<b>Applications</b>	WB
<b>Gene Name</b>	SNX33 SH3PX3 SH3PXD3C SNX30
<b>Protein Name</b>	SNX33
<b>Immunogen</b>	Synthesized peptide derived from human SNX33 AA range: 55-105
<b>Specificity</b>	This antibody detects endogenous levels of SNX33 at Human/Mouse
<b>Formulation</b>	Liquid in PBS containing 50% glycerol, 0.5% BSA and 0.02% sodium azide.
<b>Source</b>	Polyclonal, Rabbit,IgG
<b>Purification</b>	The antibody was affinity-purified from rabbit serum by affinity-chromatography using specific immunogen.
<b>Dilution</b>	WB 1: 500-2000
<b>Concentration</b>	1 mg/ml
<b>Purity</b>	≥90%
<b>Storage Stability</b>	-20°C/1 year
<b>Synonyms</b>	
<b>Observed Band</b>	
<b>Cell Pathway</b>	Cytoplasm, cytosol. Membrane; Peripheral membrane protein; Cytoplasmic side. Cytoplasmic vesicle membrane; Peripheral membrane protein; Cytoplasmic side. Primarily cytosolic, but a minor proportion is membrane-bound (PubMed:18353773). Not associated with membranes (PubMed:21048941). .
<b>Tissue Specificity</b>	Detected in heart and pancreas.
<b>Function</b>	similarity:Belongs to the sorting nexin family.,similarity:Contains 1 PX (phox homology) domain.,similarity:Contains 1 SH3 domain.,subunit:Interacts with ADAM15.,
<b>Background</b>	The protein encoded by this gene is involved in cytoskeletal reorganization, vesicle trafficking, endocytosis, and mitosis. The encoded protein is essential for the creation of the cleavage furrow during mitosis and for completion of mitosis. Two transcript variants encoding different isoforms have been found for this gene. [provided by RefSeq, Dec 2015],

Nanjing BYabscience technology Co.,Ltd



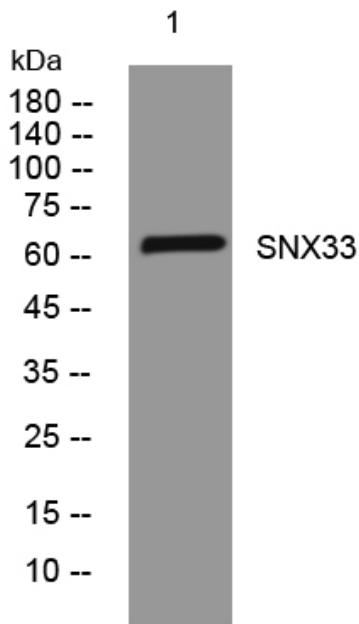
**matters needing attention**

Avoid repeated freezing and thawing!

**Usage suggestions**

This product can be used in immunological reaction related experiments. For more information, please consult technical personnel.

## Products Images



Western blot analysis of lysates from DU145 cells, primary antibody was diluted at 1:1000, 4° over night