



AEBP2 rabbit pAb

Catalog No	BYab-08875
Isotype	IgG
Reactivity	Human; Mouse
Applications	WB
Gene Name	AEBP2
Protein Name	AEBP2
Immunogen	Synthesized peptide derived from human AEBP2 AA range: 155-205
Specificity	This antibody detects endogenous levels of AEBP2 at Human/Mouse
Formulation	Liquid in PBS containing 50% glycerol, 0.5% BSA and 0.02% sodium azide.
Source	Polyclonal, Rabbit,IgG
Purification	The antibody was affinity-purified from rabbit serum by affinity-chromatography using specific immunogen.
Dilution	WB 1: 500-2000
Concentration	1 mg/ml
Purity	≥90%
Storage Stability	-20°C/1 year
Synonyms	
Observed Band	
Cell Pathway	Nucleus . Localizes to chromatin as part of the PRC2 complex. .
Tissue Specificity	
Function	function:DNA-binding transcriptional repressor. May interact with and stimulate the activity of the PRC2 complex, which methylates 'Lys-9' and 'Lys-27' residues of histone H3.,sequence caution:Translated as Gln.,similarity:Belongs to the AEBP2/jing C2H2-type zinc-finger family.,similarity:Contains 3 C2H2-type zinc fingers.,subunit:Self-associates. Interacts with EED, EZH2, RBBP4 and SUZ12. Component of the PRC2/EED-EZH1 complex, which includes EED, EZH1, SUZ12, RBBP4 and AEBP2 (By similarity). May also interact with RBBP7.,
Background	

Nanjing BYabscience technology Co.,Ltd



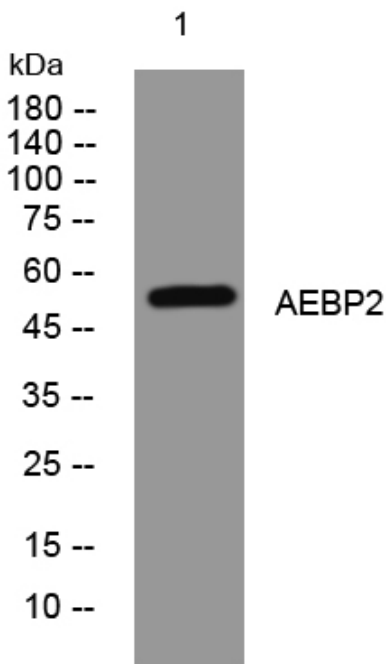
matters needing attention

Avoid repeated freezing and thawing!

Usage suggestions

This product can be used in immunological reaction related experiments. For more information, please consult technical personnel.

Products Images



Western blot analysis of lysates from THP-1 cells, primary antibody was diluted at 1:1000, 4° over night