



STX3 rabbit pAb

Catalog No	BYab-08870
Isotype	IgG
Reactivity	Human; Mouse;Rat
Applications	WB
Gene Name	STX3 STX3A
Protein Name	STX3
Immunogen	Synthesized peptide derived from human STX3 AA range: 6-56
Specificity	This antibody detects endogenous levels of STX3 at Human/Mouse/Rat
Formulation	Liquid in PBS containing 50% glycerol, 0.5% BSA and 0.02% sodium azide.
Source	Polyclonal, Rabbit,IgG
Purification	The antibody was affinity-purified from rabbit serum by affinity-chromatography using specific immunogen.
Dilution	WB 1: 500-2000
Concentration	1 mg/ml
Purity	≥90%
Storage Stability	-20°C/1 year
Synonyms	
Observed Band	
Cell Pathway	[Isoform A]: Apical cell membrane ; Single-pass type IV membrane protein . Localized to the inner and outer plexiform layers, the cell body and the inner segments of photoreceptors. . ; [Isoform 3]: Nucleus .
Tissue Specificity	[Isoform A]: Expressed in small intestine, kidney, pancreas, placenta as well as in retina. Weaker expression in lung, liver and heart. Not expressed in brain and skeletal muscle. ; [Isoform B]: Expressed only in the retina. ; [Isoform 3]: Ubiquitously expressed.
Function	function:Potentially involved in docking of synaptic vesicles at presynaptic active zones.,similarity:Belongs to the syntaxin family.,similarity:Contains 1 t-SNARE coiled-coil homology domain.,
Background	The gene is a member of the syntaxin family. The encoded protein is targeted to the apical membrane of epithelial cells where it forms clusters and is important in

Nanjing BYabscience technology Co.,Ltd



establishing and maintaining polarity necessary for protein trafficking involving vesicle fusion and exocytosis. Alternative splicing results in multiple transcript variants. [provided by RefSeq, May 2010],

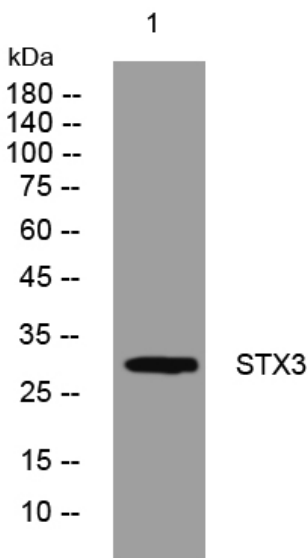
matters needing attention

Avoid repeated freezing and thawing!

Usage suggestions

This product can be used in immunological reaction related experiments. For more information, please consult technical personnel.

Products Images



Western blot analysis of lysates from K562 cells, primary antibody was diluted at 1:1000, 4° over night