



# NUP54 rabbit pAb

|                           |  |
|---------------------------|--|
| <b>Catalog No</b>         | BYab-08856   |
| <b>Isotype</b>            | IgG  |
| <b>Reactivity</b>         | Human; Mouse;Rat   |
| <b>Applications</b>       | WB   |
| <b>Gene Name</b>          | NUP54  |
| <b>Protein Name</b>       | NUP54  |
| <b>Immunogen</b>          | Synthesized peptide derived from human NUP54 AA range: 98-148  |
| <b>Specificity</b>        | This antibody detects endogenous levels of NUP54 at Human/Mouse/Rat  |
| <b>Formulation</b>        | Liquid in PBS containing 50% glycerol, 0.5% BSA and 0.02% sodium azide.  |
| <b>Source</b>             | Polyclonal, Rabbit,IgG   |
| <b>Purification</b>       | The antibody was affinity-purified from rabbit serum by affinity-chromatography using specific immunogen.  |
| <b>Dilution</b>           | WB 1: 500-2000   |
| <b>Concentration</b>      | 1 mg/ml  |
| <b>Purity</b>             | ≥90%   |
| <b>Storage Stability</b>  | -20°C/1 year   |
| <b>Synonyms</b>           |  |
| <b>Observed Band</b>      |  |
| <b>Cell Pathway</b>       | Nucleus, nuclear pore complex . Nucleus membrane ; Peripheral membrane protein ; Cytoplasmic side . Nucleus membrane ; Peripheral membrane protein ; Nucleoplasmic side . Biased towards cytoplasmic side. Central region of the nuclear pore complex, within the transporter. .   |
| <b>Tissue Specificity</b> |  |
| <b>Function</b>           | domain:Contains FG repeats.,function:Component of the nuclear pore complex, a complex required for the trafficking across the nuclear membrane.,PTM:O-glycosylated.,similarity:Belongs to the NUP54 family.,subcellular location:Biased towards cytoplasmic side. Central region of the nuclear pore complex, within the transporter.,subunit:Component of the p62 complex, a complex composed of NUP62, NUP54, and the isoform p58 and isoform p45 of NUPL1., |
| <b>Background</b>         | The nuclear envelope creates distinct nuclear and cytoplasmic compartments in eukaryotic cells. It consists of two concentric membranes perforated by nuclear  |

Nanjing BYabscience technology Co.,Ltd



pores, large protein complexes that form aqueous channels to regulate the flow of macromolecules between the nucleus and the cytoplasm. These complexes are composed of at least 100 different polypeptide subunits, many of which belong to the nucleoporin family. This gene encodes a member of the phe-gly (FG) repeat-containing nucleoporin subset. Multiple alternatively spliced transcript variants have been found for this gene. [provided by RefSeq, Jun 2013],

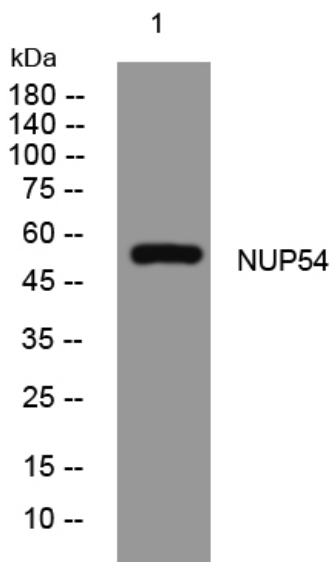
**matters needing attention**

Avoid repeated freezing and thawing!

**Usage suggestions**

This product can be used in immunological reaction related experiments. For more information, please consult technical personnel.

## Products Images



Western blot analysis of lysates from A431 cells, primary antibody was diluted at 1:1000, 4° over night