



YN4012

## ARFP2 rabbit pAb

<b>Catalog No</b>	BYab-08852
<b>Isotype</b>	IgG
<b>Reactivity</b>	Human; Mouse;Rat
<b>Applications</b>	WB
<b>Gene Name</b>	ARFIP2 POR1
<b>Protein Name</b>	ARFP2
<b>Immunogen</b>	Synthesized peptide derived from human ARFP2 AA range: 137-187
<b>Specificity</b>	This antibody detects endogenous levels of ARFP2 at Human/Mouse/Rat
<b>Formulation</b>	Liquid in PBS containing 50% glycerol, 0.5% BSA and 0.02% sodium azide.
<b>Source</b>	Polyclonal, Rabbit,IgG
<b>Purification</b>	The antibody was affinity-purified from rabbit serum by affinity-chromatography using specific immunogen.
<b>Dilution</b>	WB 1: 500-2000
<b>Concentration</b>	1 mg/ml
<b>Purity</b>	≥90%
<b>Storage Stability</b>	-20°C/1 year
<b>Synonyms</b>	
<b>Observed Band</b>	
<b>Cell Pathway</b>	Golgi apparatus . Golgi apparatus, trans-Golgi network membrane .
<b>Tissue Specificity</b>	
<b>Function</b>	function:Putative target protein of ADP-ribosylation factor. Involved in membrane ruffling.,similarity:Contains 1 AH domain.,subunit:Interacts with RAC1 by binding directly to it. Specifically binds to GTP-bound ARF1 and ARF6, but binds to RAC1.GTP and RAC1.GDP with similar affinities.,
<b>Background</b>	

Nanjing BYabscience technology Co.,Ltd



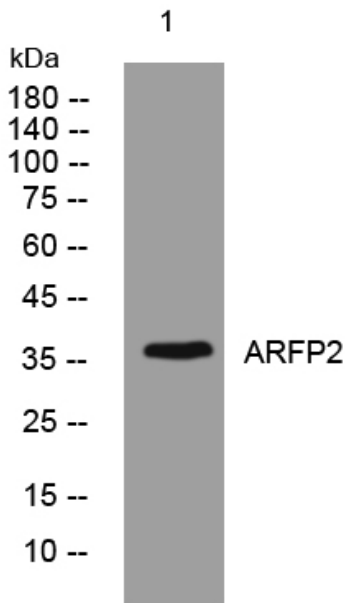
**matters needing attention**

Avoid repeated freezing and thawing!

**Usage suggestions**

This product can be used in immunological reaction related experiments. For more information, please consult technical personnel.

## Products Images



Western blot analysis of lysates from THP-1 cells, primary antibody was diluted at 1:1000, 4° over night