



SUOX rabbit pAb

Catalog No	BYab-08851
Isotype	IgG
Reactivity	Human; Mouse;Rat
Applications	WB
Gene Name	SUOX
Protein Name	SUOX
Immunogen	Synthesized peptide derived from human SUOX AA range: 64-114
Specificity	This antibody detects endogenous levels of SUOX at Human/Mouse/Rat
Formulation	Liquid in PBS containing 50% glycerol, 0.5% BSA and 0.02% sodium azide.
Source	Polyclonal, Rabbit,IgG
Purification	The antibody was affinity-purified from rabbit serum by affinity-chromatography using specific immunogen.
Dilution	WB 1: 500-2000
Concentration	1 mg/ml
Purity	≥90%
Storage Stability	-20°C/1 year
Synonyms	
Observed Band	
Cell Pathway	Mitochondrion intermembrane space .
Tissue Specificity	
Function	catalytic activity:Sulfite + O(2) + H(2)O = sulfate + H(2)O(2).,cofactor:Binds 1 protoheme group.,cofactor:Molybdenum (molybdopterin).,disease:Defects in SUOX are the cause of isolated sulfite oxidase deficiency (ISOD) [MIM:272300]; also known as sulfocysteinuria. ISOD is characterized by neurological abnormalities including multicystic leukoencephalopathy with brain atrophy. Patients often suffer from seizures. Often leads to death at an early age.,pathway:Energy metabolism; sulfur metabolism.,similarity:Contains 1 cytochrome b5 heme-binding domain.,subunit:Homodimer.,
Background	Sulfite oxidase is a homodimeric protein localized to the intermembrane space of mitochondria. Each subunit contains a heme domain and a molybdopterin-binding domain. The enzyme catalyzes the oxidation of sulfite to sulfate, the final reaction

Nanjing BYabscience technology Co.,Ltd



in the oxidative degradation of the sulfur amino acids cysteine and methionine. Sulfite oxidase deficiency results in neurological abnormalities which are often fatal at an early age. Alternative splicing results in multiple transcript variants encoding identical proteins. [provided by RefSeq, Jul 2008],

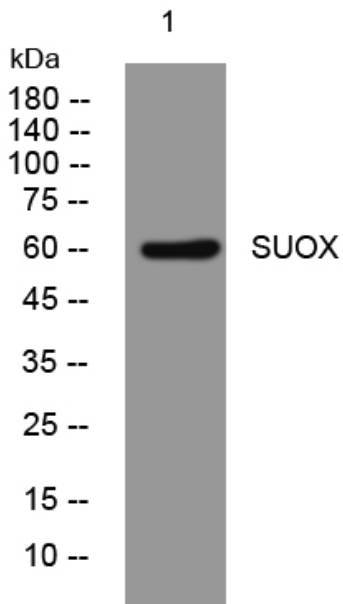
matters needing attention

Avoid repeated freezing and thawing!

Usage suggestions

This product can be used in immunological reaction related experiments. For more information, please consult technical personnel.

Products Images



Western blot analysis of lysates from 293T cells, primary antibody was diluted at 1:1000, 4° over night