



DLGP4 rabbit pAb

Catalog No	BYab-08845
Isotype	IgG
Reactivity	Human; Mouse;Rat
Applications	WB
Gene Name	DLGAP4 DAP4 KIAA0964 SAPAP4
Protein Name	DLGP4
Immunogen	Synthesized peptide derived from human DLGP4 AA range: 220-270
Specificity	This antibody detects endogenous levels of DLGP4 at Human/Mouse/Rat
Formulation	Liquid in PBS containing 50% glycerol, 0.5% BSA and 0.02% sodium azide.
Source	Polyclonal, Rabbit,IgG
Purification	The antibody was affinity-purified from rabbit serum by affinity-chromatography using specific immunogen.
Dilution	WB 1: 500-2000
Concentration	1 mg/ml
Purity	≥90%
Storage Stability	-20°C/1 year
Synonyms	
Observed Band	
Cell Pathway	Membrane ; Peripheral membrane protein .
Tissue Specificity	
Function	function:May play a role in the molecular organization of synapses and neuronal cell signaling. Could be an adapter protein linking ion channel to the subsynaptic cytoskeleton. May induce enrichment of PSD-95/SAP90 at the plasma membrane.,similarity:Belongs to the SAPAP family.,subunit:Interacts with DLG1 and DLG4/PSD-95.,
Background	The product of this gene is a membrane-associated guanylate kinase found at the postsynaptic density in neuronal cells. It is a signaling molecule that can interact with potassium channels and receptors, as well as other signaling molecules. The protein encoded by this gene can interact with PSD-95 through its guanylate kinase domain and may be involved in clustering PSD-95 in the postsynaptic density region. The encoded protein is one of at least four similar proteins that

Nanjing BYabscience technology Co.,Ltd



have been found. Alternatively spliced transcript variants encoding different isoforms have been found for this gene. [provided by RefSeq, Jul 2008],

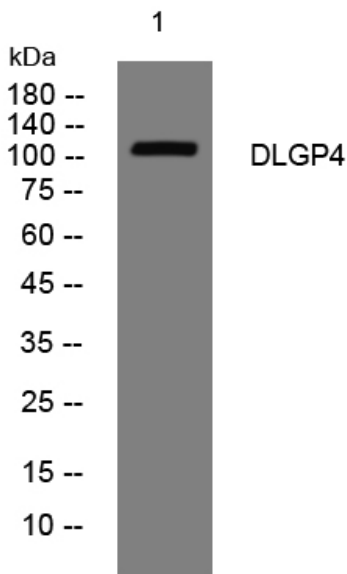
matters needing attention

Avoid repeated freezing and thawing!

Usage suggestions

This product can be used in immunological reaction related experiments. For more information, please consult technical personnel.

Products Images



Western blot analysis of lysates from U2OS cells, primary antibody was diluted at 1:1000, 4° over night