



# UN93B rabbit pAb

<b>Catalog No</b>	BYab-08835
<b>Isotype</b>	IgG
<b>Reactivity</b>	Human; Mouse
<b>Applications</b>	WB
<b>Gene Name</b>	UNC93B1 UNC93 UNC93B
<b>Protein Name</b>	UN93B
<b>Immunogen</b>	Synthesized peptide derived from human UN93B AA range: 347-397
<b>Specificity</b>	This antibody detects endogenous levels of UN93B at Human/Mouse
<b>Formulation</b>	Liquid in PBS containing 50% glycerol, 0.5% BSA and 0.02% sodium azide.
<b>Source</b>	Polyclonal, Rabbit,IgG
<b>Purification</b>	The antibody was affinity-purified from rabbit serum by affinity-chromatography using specific immunogen.
<b>Dilution</b>	WB 1: 500-2000
<b>Concentration</b>	1 mg/ml
<b>Purity</b>	≥90%
<b>Storage Stability</b>	-20°C/1 year
<b>Synonyms</b>	
<b>Observed Band</b>	
<b>Cell Pathway</b>	Endoplasmic reticulum membrane ; Multi-pass membrane protein . Endosome . Lysosome . Cytoplasmic vesicle, phagosome . Relocalizes from endoplasmic reticulum to endosome and lysosome upon cell-stimulation with CpG dinucleotides (By similarity). Colocalizes with LAMP5 in large endosomal intracellular vesicles. .
<b>Tissue Specificity</b>	Expressed in plasmacytoid dendritic cells (at protein level). Highly expressed in antigen-presenting cells. Expressed in heart, and at lower level in kidney. Expressed at low level in other tissues.
<b>Function</b>	disease:Defects in UNC93B1 are associated with susceptibility to herpes simplex encephalitis (HSE) [MIM:610551]. HSE is a rare complication of human herpesvirus 1 (HHV-1) infection, occurring in only a small minority of HHV-1 infected individuals. HSE is characterized by hemorrhagic necrosis of parts of the temporal and frontal lobes. Onset is over several days and involves fever, headache, seizures, stupor, and often coma, frequently with a fatal outcome. UNC93B-deficient HSE does not compromise immunity to most pathogens, unlike

Nanjing BYabscience technology Co.,Ltd



most known primary immunodeficiencies.,online information:UNC93B1 mutation db,similarity:Belongs to the unc-93 family.,tissue specificity:Expressed in heart, heart, and at lower level in kidney. Expressed at low level in other tissues.,

**Background**

This gene encodes a protein that is involved in innate and adaptive immune response by regulating toll-like receptor signaling. The encoded protein traffics nucleotide sensing toll-like receptors to the endolysosome from the endoplasmic reticulum. Deficiency of the encoded protein has been associated with herpes simplex encephalitis. [provided by RefSeq, Feb 2014],

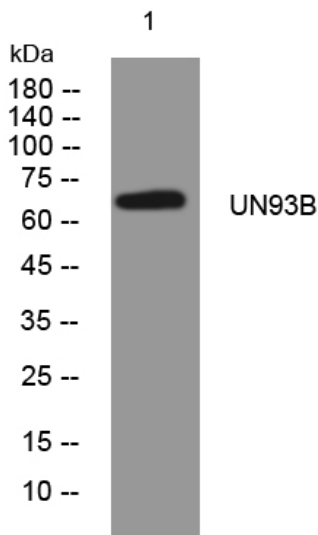
**matters needing attention**

Avoid repeated freezing and thawing!

**Usage suggestions**

This product can be used in immunological reaction related experiments. For more information, please consult technical personnel.

**Products Images**



Western blot analysis of lysates from HpeG2 cells, primary antibody was diluted at 1:1000, 4° over night