



# RUN3B rabbit pAb

<b>Catalog No</b>	BYab-08829
<b>Isotype</b>	IgG
<b>Reactivity</b>	Human; Mouse;Rat
<b>Applications</b>	WB
<b>Gene Name</b>	RUNDC3B RPIB9 RPIP9
<b>Protein Name</b>	RUN3B
<b>Immunogen</b>	Synthesized peptide derived from human RUN3B AA range: 79-129
<b>Specificity</b>	This antibody detects endogenous levels of RUN3B at Human/Mouse/Rat
<b>Formulation</b>	Liquid in PBS containing 50% glycerol, 0.5% BSA and 0.02% sodium azide.
<b>Source</b>	Polyclonal, Rabbit,IgG
<b>Purification</b>	The antibody was affinity-purified from rabbit serum by affinity-chromatography using specific immunogen.
<b>Dilution</b>	WB 1: 500-2000
<b>Concentration</b>	1 mg/ml
<b>Purity</b>	≥90%
<b>Storage Stability</b>	-20°C/1 year
<b>Synonyms</b>	
<b>Observed Band</b>	
<b>Cell Pathway</b>	
<b>Tissue Specificity</b>	Isoform 2 is expressed at high levels in brain, thymus, ovary, testis, leukocyte, liver, small intestine and prostate. Isoform 1 is expressed in the brain, testis and adrenal gland. It is activated in tumorigenic breast cancer cell lines and in the primary tumor of breast cancer patients. Activation also correlates with metastatic lymph node invasion and can be detected in metastatic epithelial cells from the lymph nodes and in the bone marrow of patients.
<b>Function</b>	similarity:Belongs to the RUNDC3 family.,similarity:Contains 1 RUN domain.,subunit:Interacts with RAP2A.,tissue specificity:Isoform 2 is expressed at high levels in brain, thymus, ovary, testis, leukocyte, liver, small intestine and prostate. Isoform 1 is expressed in the brain, testis and adrenal gland. It is activated in tumorigenic breast cancer cell lines and in the primary tumor of breast cancer patients. Activation also correlates with metastatic lymph node invasion and can be detected in metastatic epithelial cells from the lymph nodes and in the bone marrow of patients.,

Nanjing BYabscience technology Co.,Ltd



## Background

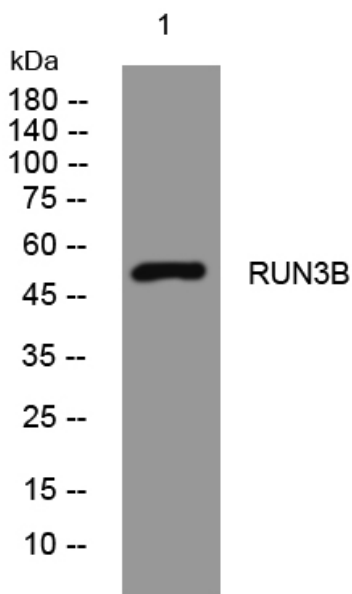
### matters needing attention

Avoid repeated freezing and thawing!

### Usage suggestions

This product can be used in immunological reaction related experiments. For more information, please consult technical personnel.

## Products Images



Western blot analysis of lysates from 293T cells, primary antibody was diluted at 1:1000, 4° over night