



YN3980

# UBIP1 rabbit pAb

<b>Catalog No</b>	BYab-08821
<b>Isotype</b>	IgG
<b>Reactivity</b>	Human; Mouse
<b>Applications</b>	WB
<b>Gene Name</b>	UBP1 LBP1
<b>Protein Name</b>	UBIP1
<b>Immunogen</b>	Synthesized peptide derived from human UBIP1 AA range: 264-314
<b>Specificity</b>	This antibody detects endogenous levels of UBIP1 at Human/Mouse
<b>Formulation</b>	Liquid in PBS containing 50% glycerol, 0.5% BSA and 0.02% sodium azide.
<b>Source</b>	Polyclonal, Rabbit,IgG
<b>Purification</b>	The antibody was affinity-purified from rabbit serum by affinity-chromatography using specific immunogen.
<b>Dilution</b>	WB 1: 500-2000
<b>Concentration</b>	1 mg/ml
<b>Purity</b>	≥90%
<b>Storage Stability</b>	-20°C/1 year
<b>Synonyms</b>	
<b>Observed Band</b>	
<b>Cell Pathway</b>	Nucleus .
<b>Tissue Specificity</b>	Expressed in adrenal tissue, JEG-3, NCI-H295A, Hep-G2 and HeLa cell lines.
<b>Function</b>	function:Functions as a transcriptional activator in a promoter context-dependent manner. Modulates the placental expression of CYP11A1. Involved in regulation of the alpha-globin gene in erythroid cells. Activation of the alpha-globin promoter in erythroid cells is via synergistic interaction with TFCEP2 (By similarity). Involved in regulation of the alpha-globin gene in erythroid cells. Activation of the alpha-globin promoter in erythroid cells is via synergistic interaction with TFCEP2 (By similarity). Binds strongly to sequences around the HIV-1 initiation site and weakly over the TATA-box. Represses HIV-1 transcription by inhibiting the binding of TFIID to the TATA-box.,induction:Induced by HIV-1 infection of lymphocytes.,similarity:Belongs to the grh/CP2 family. CP2

Nanjing BYabscience technology Co.,Ltd



subfamily.,subunit:Interacts with TFCP2. Interacts with PIAS1, and is probably part of a complex containing TFCP2, UBP1

### Background

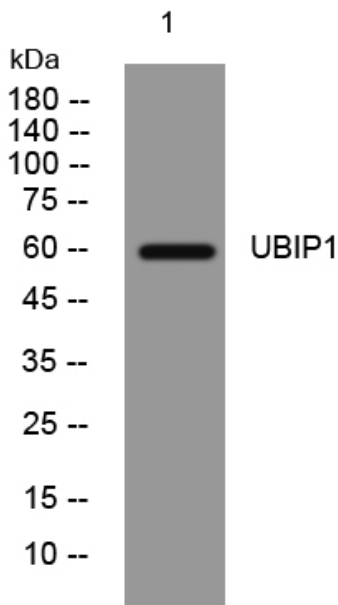
### matters needing attention

Avoid repeated freezing and thawing!

### Usage suggestions

This product can be used in immunological reaction related experiments. For more information, please consult technical personnel.

## Products Images



Western blot analysis of lysates from DU145 cells, primary antibody was diluted at 1:1000, 4° over night