



CHST7 rabbit pAb

Catalog No	BYab-08818
Isotype	IgG
Reactivity	Human; Mouse;Rat
Applications	WB
Gene Name	CHST7
Protein Name	CHST7
Immunogen	Synthesized peptide derived from human CHST7 AA range: 299-349
Specificity	This antibody detects endogenous levels of CHST7 at Human/Mouse/Rat
Formulation	Liquid in PBS containing 50% glycerol, 0.5% BSA and 0.02% sodium azide.
Source	Polyclonal, Rabbit,IgG
Purification	The antibody was affinity-purified from rabbit serum by affinity-chromatography using specific immunogen.
Dilution	WB 1: 500-2000
Concentration	1 mg/ml
Purity	≥90%
Storage Stability	-20°C/1 year
Synonyms	
Observed Band	
Cell Pathway	Golgi apparatus membrane ; Single-pass type II membrane protein .
Tissue Specificity	Widely expressed. Highly expressed in heart, spleen, liver and ovary. Expressed at lower level in brain, placenta, thyroid, spinal cord and peripheral blood leukocytes. Not expressed in adult skin.
Function	catalytic activity:3'-phosphoadenylyl sulfate + chondroitin = adenosine 3',5'-bisphosphate + chondroitin 6'-sulfate.,function:Catalyzes the transfer of sulfate to position 6 of non-reducing N-acetylglucosamine (GlcNAc) residues. Preferentially acts on mannose-linked GlcNAc. Also able to catalyze the transfer of sulfate to position 6 of the N-acetylgalactosamine (GalNAc) residue of chondroitin. Also acts on core 2 mucin-type oligosaccharide and N-acetylglucosamine oligomer with a lower efficiency. Has weak or no activity toward keratan sulfate and oligosaccharides containing the Galbeta1-4GlcNAc. Catalyzes 6-O-sulfation of beta-benzyl GlcNAc but not alpha- or beta-benzyl GalNAc.,online information:GlycoGene database,similarity:Belongs to the sulfotransferase 1 family. Gal/GlcNAc/GalNAc subfamily.,tissue specificity:Widely

Nanjing BYabscience technology Co.,Ltd



expressed. Highly expressed in heart, spleen, liver and ovary. Expr

Background

This gene is a member of the Gal/GalNAc/GlcNAc (galactose/N-acetylgalactosamine/N-acetylglucosamine) 6-O-sulfotransferase (GST) family. Members of this family encode enzymes that catalyze the specific addition of sulfate groups to distinct hydroxyl and amino groups of carbohydrates. The encoded protein catalyzes the sulfation of 6-hydroxyl group of GalNAc in chondroitin. [provided by RefSeq, Aug 2013],

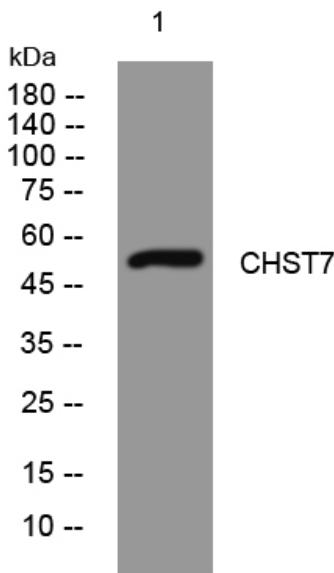
matters needing attention

Avoid repeated freezing and thawing!

Usage suggestions

This product can be used in immunological reaction related experiments. For more information, please consult technical personnel.

Products Images



Western blot analysis of lysates from SW480 cells, primary antibody was diluted at 1:1000, 4° over night