



SPS1 rabbit pAb

Catalog No	BYab-08808
Isotype	IgG
Reactivity	Human; Mouse
Applications	WB
Gene Name	SEPHS1 SELD SPS SPS1
Protein Name	SPS1
Immunogen	Synthesized peptide derived from human SPS1 AA range: 323-373
Specificity	This antibody detects endogenous levels of SPS1 at Human/Mouse
Formulation	Liquid in PBS containing 50% glycerol, 0.5% BSA and 0.02% sodium azide.
Source	Polyclonal, Rabbit,IgG
Purification	The antibody was affinity-purified from rabbit serum by affinity-chromatography using specific immunogen.
Dilution	WB 1: 500-2000
Concentration	1 mg/ml
Purity	≥90%
Storage Stability	-20°C/1 year
Synonyms	
Observed Band	
Cell Pathway	[Isoform 1]: Cell membrane ; Peripheral membrane protein . Nucleus membrane ; Peripheral membrane protein . ; [Isoform 2]: Cytoplasm . ; [Isoform 3]: Cytoplasm . ; [Isoform 4]: Cytoplasm .
Tissue Specificity	[Isoform 1]: Gradually expressed during the cell cycle until G2/M phase and then decreases. ; [Isoform 2]: Gradually expressed during the cell cycle until G2/M phase and then decreases. ; [Isoform 3]: Gradually expressed during the cell cycle until S phase and then decreases.
Function	catalytic activity:ATP + selenide + H(2)O = AMP + selenophosphate + phosphate.,caution:The conserved active site Cys (or selenocysteine) residue in position 29 is replaced by a Thr. However, as function in selenoprotein synthesis is proven, it is possible Cys-31 is the active site.,function:Synthesizes selenophosphate from selenide and ATP.,similarity:Belongs to the selenophosphate synthetase 1 family. Class II subfamily.,
Background	This gene encodes an enzyme that synthesizes selenophosphate from selenide and ATP. Selenophosphate is the selenium donor used to synthesize

Nanjing BYabscience technology Co.,Ltd



selenocysteine, which is co-translationally incorporated into selenoproteins at in-frame UGA codons. [provided by RefSeq, Sep 2010],

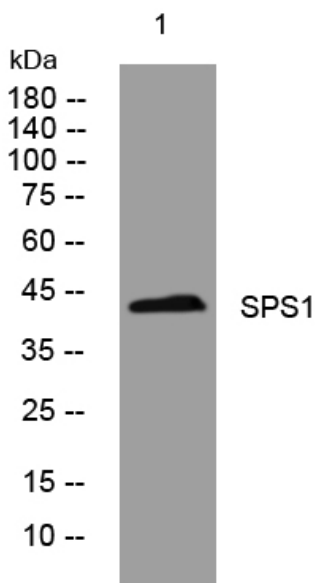
matters needing attention

Avoid repeated freezing and thawing!

Usage suggestions

This product can be used in immunological reaction related experiments. For more information, please consult technical personnel.

Products Images



Western blot analysis of lysates from AD293 cells, primary antibody was diluted at 1:1000, 4° over night